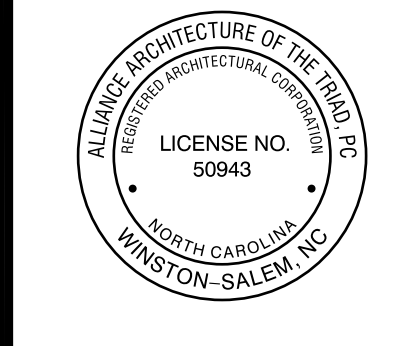


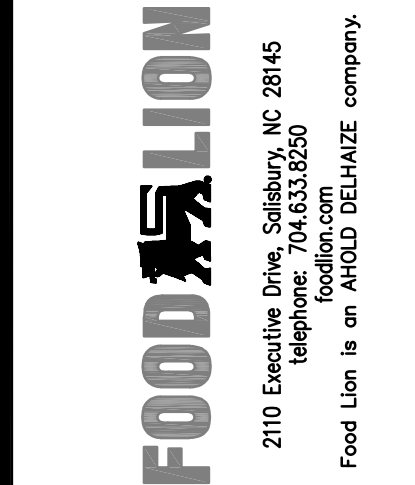
PROFESSIONAL'S SEAL:



CORPORATE SEAL:



REVISIONS
 NO DATE REMARKS

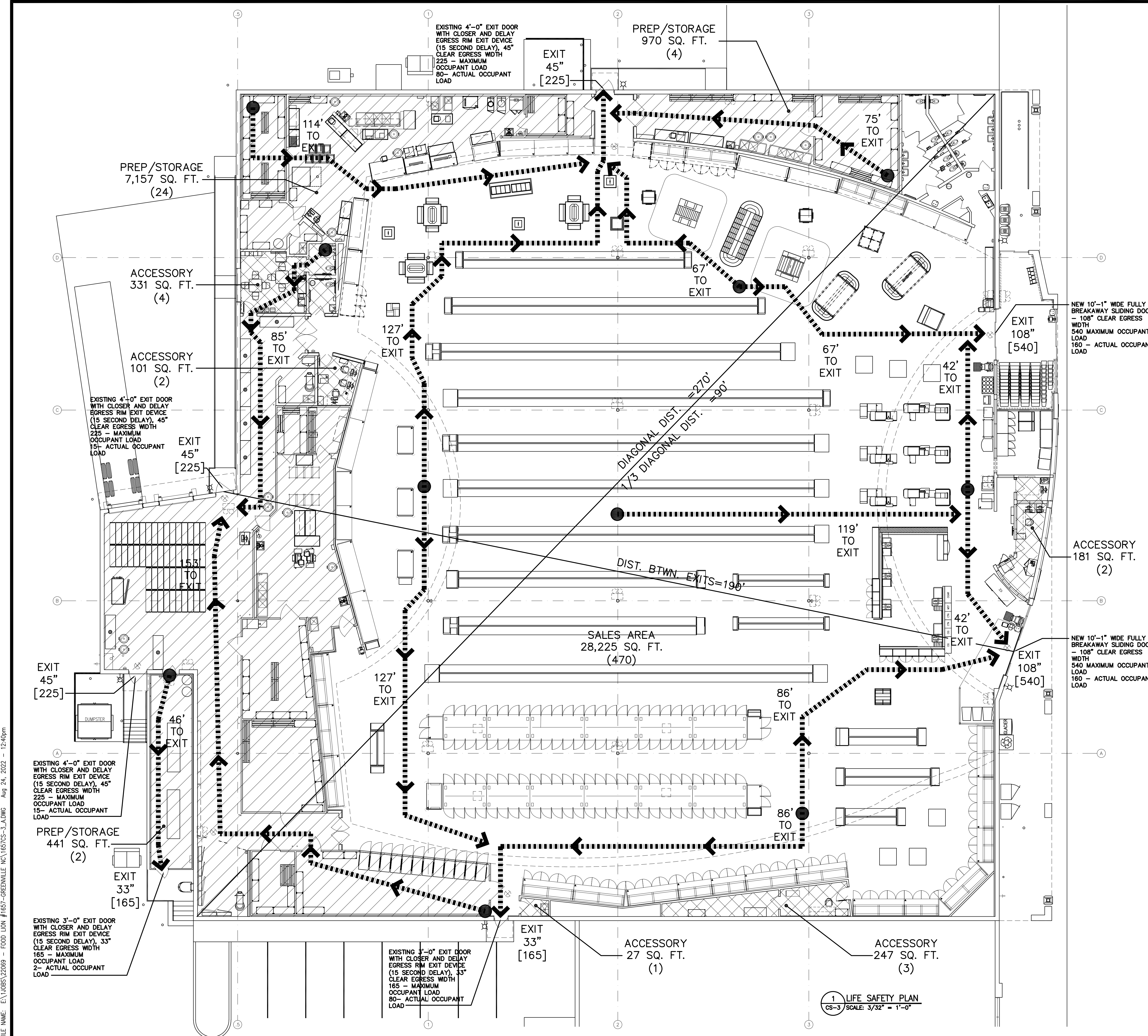


FOOD LION REMODEL STORE #1657
 4330 E. TENTH STREET
 GREENVILLE, NC

PROJECT NO: 1657FLMK22
 DATE: 08/29/2022

03 OF 40
CS-3
 LIFE SAFETY PLAN

CHECKED: A.J.L. DRAWN: V.P.S.



OCCUPANT LOAD PER TABLE 1004.5, 2018 NCBC

OCCUPANT TYPE	GROSS AREA	SF/PERSON	ALLOWABLE LOAD
PREP/STORAGE	8,568 SF	300	30 (29) OCCUPANTS
ACCESSORY (OFFICE USE)	887 SF	100	12 (9) OCCUPANTS
SALES AREA	28,225 SF	60	470 OCCUPANTS
TOTAL	37,239 SF		512 OCCUPANTS

LEGEND

- PREP/STORAGE (AREA) (OCC. LOAD)
- ACCESSORY (CONFERENCE ROOM, A-3 UNCONCENTRATED) (OCC. LOAD)
- ACCESSORY (AREA) (OCC. LOAD)
- SALES AREAS (AREA) (OCC. LOAD)
- EGRESS ROUTE
- MOST REMOTE POINT
- EXIT LIGHTS
- EMERGENCY LIGHTS
- EXIT DOOR CLEAR WIDTH DOOR OCC. LOAD

EGRESS PER 2018 NCBC

CLEAR WIDTH PROVIDED	REQUIRED	OCCUPANT
108"	.2" x OCCUPANT	
45"		
45"		
33"		512 OCCUPANTS
33"		x .2
TOTAL	384"	102.4"

EXITS PROVIDED 7 | REQUIRED 3

TRAVEL DISTANCE MAX 250' | ACTUAL 153'

EXIT SEPARATION PROVIDED MIN 190' | REQUIRED MIN DIAGONAL 270'/3 90'

- LIFE SAFETY GENERAL NOTES:**
- MERCANTILE OFFICE ALTERATION DESIGNED UNDER LIST CODE.
 - THIS BUILDING IS TYPE II-B CONSTRUCTION, MERCANTILE OCCUPANCY, SPRINKLERED.
 - MAXIMUM ALLOWABLE EXIT ACCESS DISTANCE = 250' (MERCANTILE)
 - MAXIMUM ALLOWABLE COMMON PATH OF TRAVEL DISTANCE = 75'
 - MAXIMUM ALLOWABLE DEAD END TRAVEL DISTANCE IN CORRIDORS = 20'
 - CLEAR OPENING WIDTH FOR A SINGLE 36" WIDE DOOR SHOULD BE CONSIDERED 33" TO COMPENSATE FOR STOP, DOOR THICKNESS AND HINGE THROW.
 - SEE SHEET A1.03 GENERAL NOTE #14 FOR FIRE EXTINGUISHER REQUIREMENTS.
 - FIRE EXTINGUISHER SIGNS FOR CURVED SURFACES (INCLUDING ROUND AND SQUARE COLUMNS) - PROVIDE 18" X 4" W GLOW-IN-THE-DARK ADHESIVE SIGN EQUAL TO BRADY SV184G (GRANGER ITEM #32MD69).
 - FIRE EXTINGUISHER SIGNS FOR FLAT WALL SURFACES - PROVIDE 18" X 4" W GLOW-IN-THE-DARK PLASTIC SIGN EQUAL TO ACCUFORM SIGNS MFXG551GP (GRANGER ITEM #8F2W).
 - ALL EXITS ARE TO EXISTING TO REMAIN UNCHANGED UNLESS NOTED OTHERWISE.

1 LIFE SAFETY PLAN
 CS-3 SCALE: 3/32" = 1'-0"

FILE NAME: E:\10085\22089 - FOOD LION #1657-GREENVILLE.NC\1657CS-3_A.DWG Aug 24, 2022 - 12:40pm