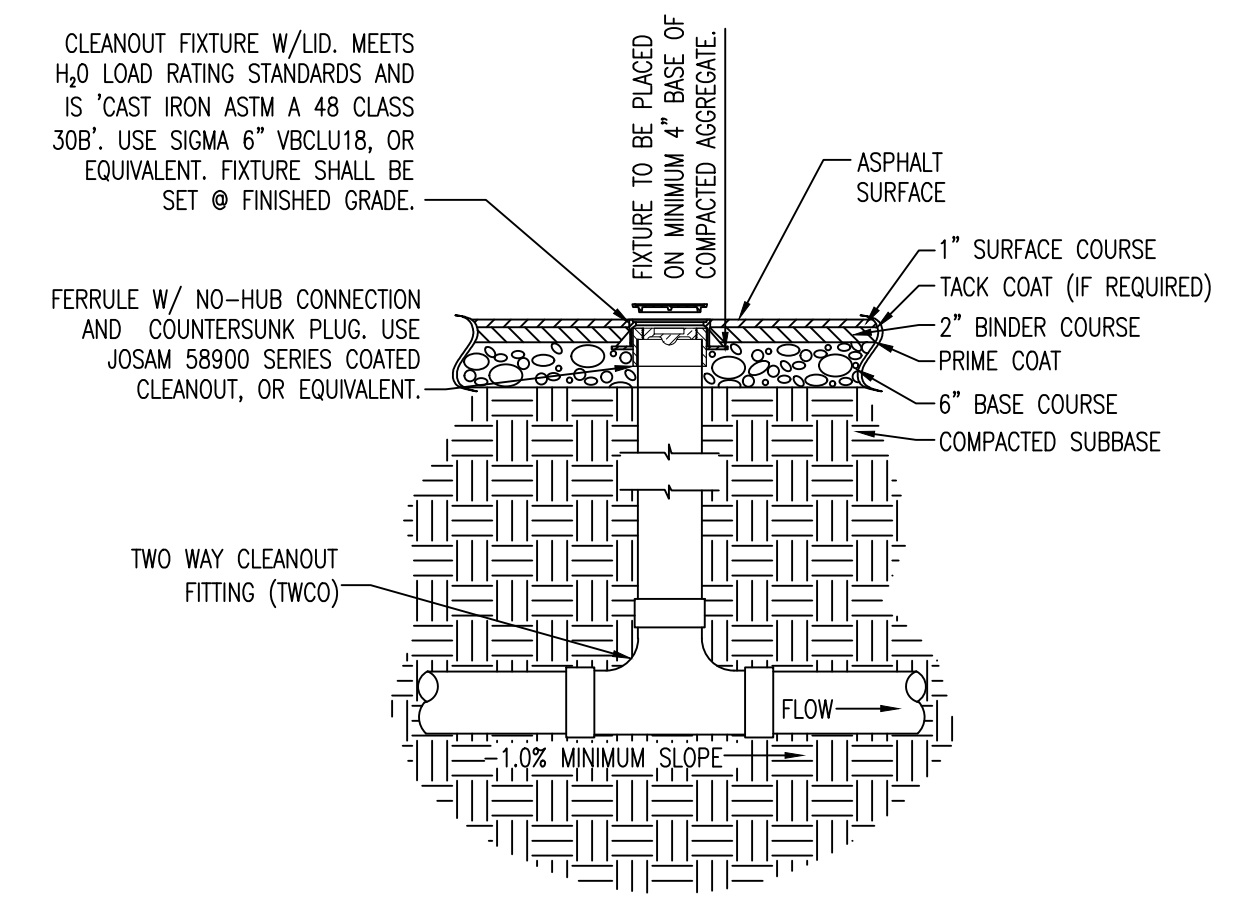
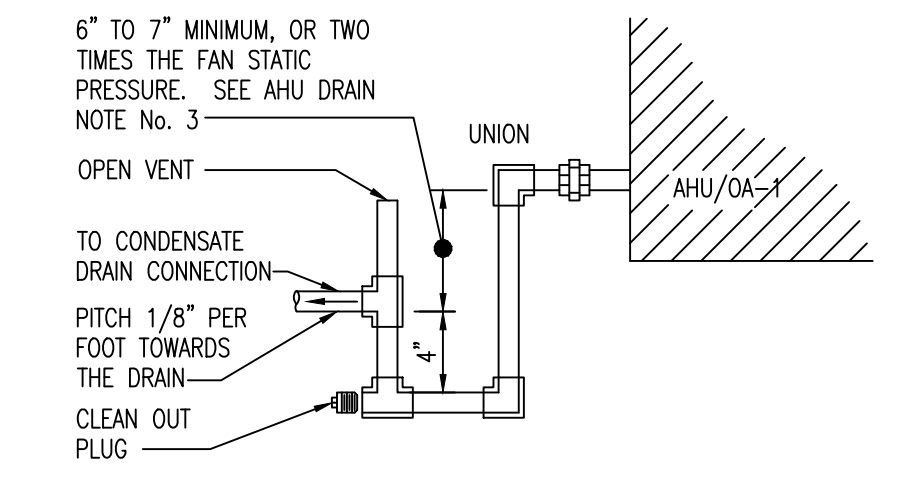


6 TWO-WAY CLEAN OUT SECTION IN CONCRETE
P5.01 NTS



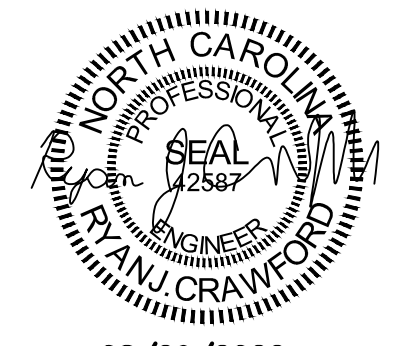
7 TWO-WAY CLEAN OUT SECTION IN ASPHALT
P5.01 NTS



- AHU DRAIN NOTES**
- CONDENSATE PIPE SHALL BE TYPE "L" HARD COPPER WITH SOLDERED JOINTS WITH 3/4" ARMAFLEX INSULATION.
 - DRAIN PIPE SHALL BE SAME SIZE AS AHU DRAIN OR LARGER. TRAP EACH UNIT DRAIN PORT INDIVIDUALLY.
 - THE DIFFERENCE IN CENTER LINE ELEVATIONS MUST EXCEED THE FAN STATIC PRESSURE. THE HYDRAULIC LEG MUST BE ABLE TO OVERCOME THE FAN SUCTION TO ALLOW DRAINAGE OR THE CONDENSATE WILL NOT FLOW OUT.
 - CONDENSATE PIPING BY MECHANICAL CONTRACTOR.

8 AHU DRAIN PIPING DETAIL
P5.01 NTS

PROFESSIONAL'S SEAL:



08/29/2022
CORPORATE SEAL:

REVISIONS

NO	DATE	REMARKS
1	00/00/00	COMMENTS

END