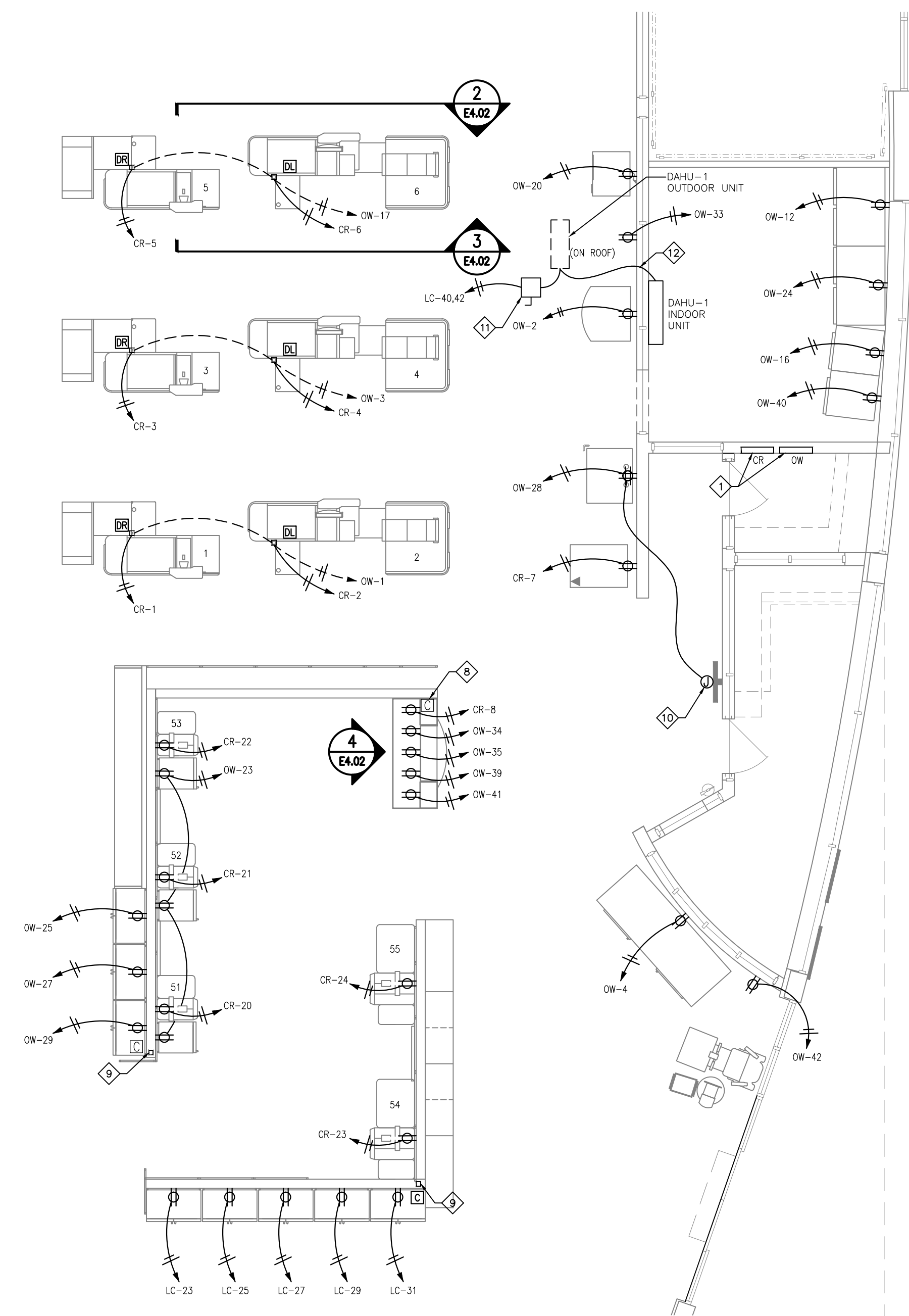
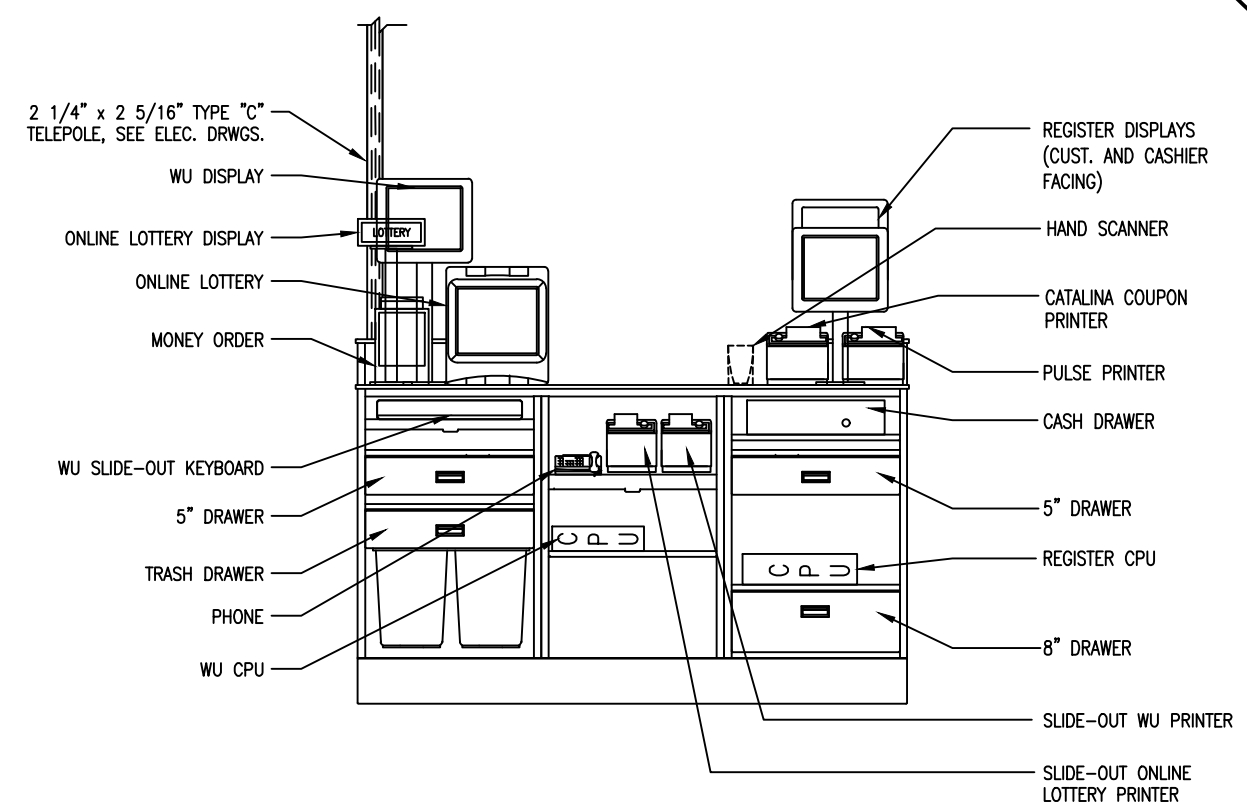
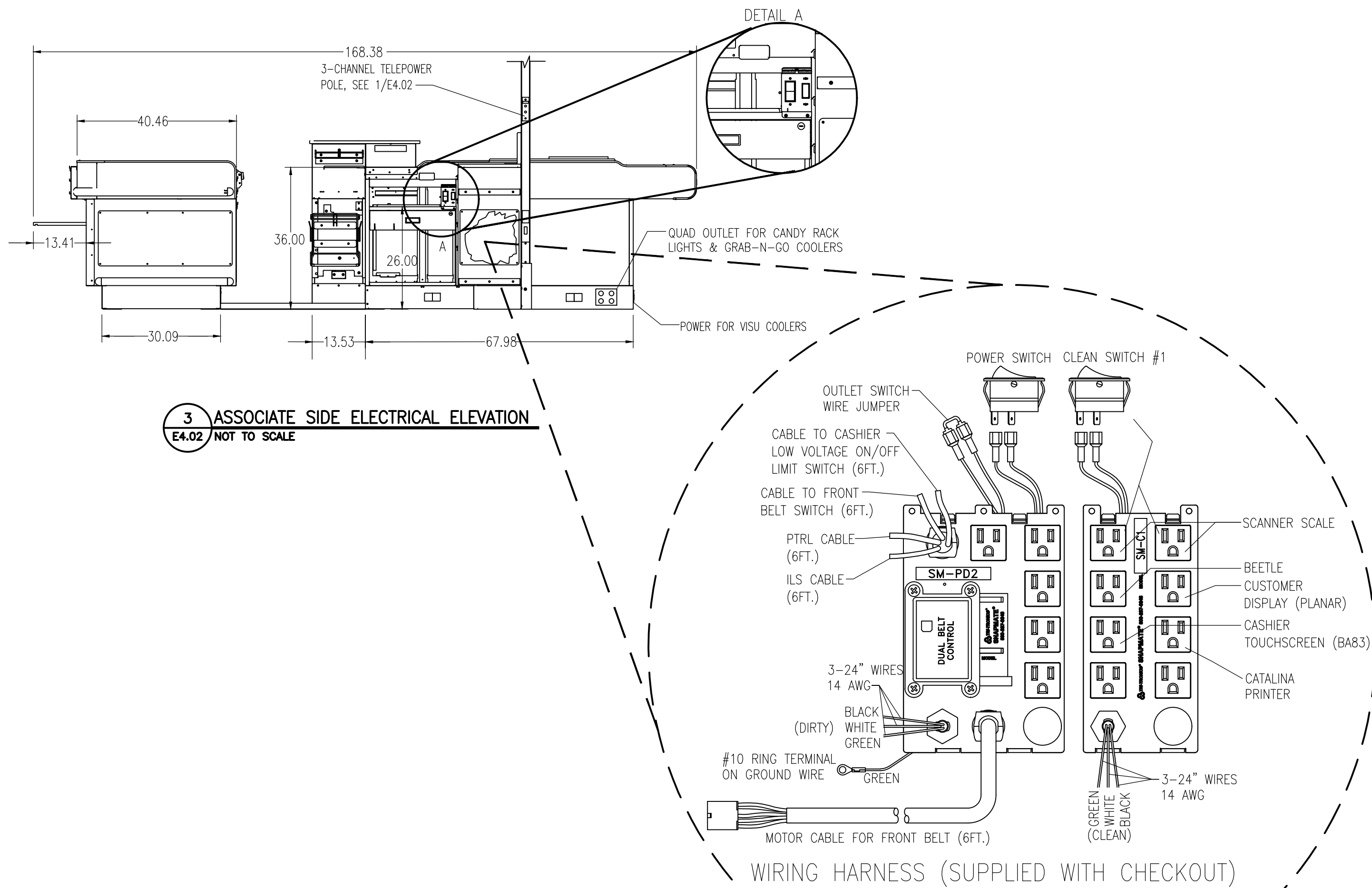


2 CUSTOMER SIDE ELECTRICAL ELEVATION
E4.02 NOT TO SCALE



- CHECKOUT WIRING LEGEND**
- DIRTY CIRCUIT No. 1 (BELT MOTOR, STAND LIGHT, CANDY RACK LIGHTS GEN. RECEPTACLES.)
 - DIRTY CIRCUIT No. 2 (VISU COOLERS)
 - CLEAN CIRCUIT No. 1 (REGISTER, CATALINA, DEBIT CARD, SCANNER & SCALE, SPARE RECEPT.)

- CHECKOUT INSTALLATION NOTES**
- SEE SHEET E4.03 FOR WORKROOM, CUSTOMER SERVICE AND CHECKOUT COMMUNICATION WIRING.
 - MOUNT QUAD OUTLET FLUSH IN THE CHECKOUT STAND FOR THE VISU COOLER(S) AND LED CANDY RACK LIGHTING AT THIS LOCATION. RECEPTACLE TO BE MOUNTED 1'-4" A.F.F. IN THE SIDE NEAREST THE CASHIER AND ACCESSIBLE TO THE VISU COOLER CONNECTION. FACE PLATE TO BE PAINTED TO MATCH CHECKOUT STAND COLOR. COORDINATE LOCATION WITH PRE-WIRED CONTROLS MOUNTED INSIDE THE CHECKOUT.
 - CASH REGISTER CIRCUITS SHALL BE PROVIDED WITH DEDICATED NEUTRAL AND GREEN ISOLATED GROUND. BX CABLES SHALL BE INSTALLED WITH INSULATED THROATS AND APPROVED CONNECTORS.
 - ELECTRICAL CONTRACTOR & FOOD LION COMMUNICATION VENDOR SHALL COORDINATE TELEPOLE LOCATIONS WITH LIGHTING & HVAC PRIOR TO INSTALLATION TO MINIMIZE INSTALLATION CONFLICTS.

- ELECTRICAL WIRING KEY NOTES**
- EXISTING PANEL SCHEDULE FOR PANELS OW AND CR NOT LABELED CORRECTLY. ELECTRICAL CONTRACTOR TO TRACE AND FIELD VERIFY EACH CIRCUIT IN PANEL OW AND PROPERLY LABEL CIRCUITS IN TYPED WRITTEN PANEL SCHEDULE IN PANEL.
 - ELECTRICAL CONTRACTOR TO CONNECT POWER FOR NEW CHECK STAND "DIRTY POWER" AND VISU COOLERS TO EXISTING CIRCUITS IN PANEL OW MADE SPARE BY REMOVAL OF EXISTING CHECK STAND EQUIPMENT.
 - ELECTRICAL CONTRACTOR TO RECONNECT RELOCATED EQUIPMENT TO EXISTING CIRCUITS AT NEW LOCATION. EXTEND EXISTING CIRCUITRY AS REQUIRED.
 - VERIFY EXISTING CONDITIONS - CIRCUIT TO BE DEDICATED FED FROM CR PANEL. RE-CIRCUIT AS NECESSARY.
 - ELECTRICAL CONTRACTOR TO CONNECT NEW EQUIPMENT TO NEW CIRCUITS OR REUSE EXISTING CIRCUITS AS REQUIRED.
 - CONDUITS ON THIS WALL TO BE RECESSED BEHIND GWB.
 - DEDICATED 120V RECEPTACLES FOR NEWGEN DATA CABINET PROVIDED AND INSTALLED ABOVE CEILING BY SEPARATE OWNER CONTRACTOR.
 - TELEPOWER POLE ON TOP OF LOW WALL FOR WIRING TO CUSTOMER SERVICE COUNTER. SEE TELEPOWER POLE INSTALLATION NOTES ON E1.02.
 - TELEPOWER POLE ON TOP OF LOW WALL FOR WIRING TO SELF-CHECKOUTS AND GRAB-N-GO COOLERS.
 - MOUNT ABOVE CEILING FOR POWER TO FL2GO MONITOR.
 - 30A/2P NON-FUSIBLE SAFETY SWITCH WITH NEMA 3R ENCLOSURE. MOUNT ABOVE ROOF NEXT TO DAHU-1 OUTDOOR UNIT.
 - CONNECT TO OUTDOOR UNIT PER MANUFACTURER'S INSTRUCTIONS.

PROFESSIONAL'S SEAL:



08/29/2022
CORPORATE SEAL:

REVISIONS
NO DATE REMARKS

FOOD LION REMODEL STORE #1657
4330 E. TENTH STREET
GREENVILLE, NC

PROJECT NO: 1657/FLMK22
DATE: 08/29/2022
33 OF 40
E4.02
CUSTOMER SERVICE, WORKROOM, AND CHECKOUT POWER PLAN
CHECKED: DOD DRAWN: DOD