

CHECKOUT INSTALLATION NOTES

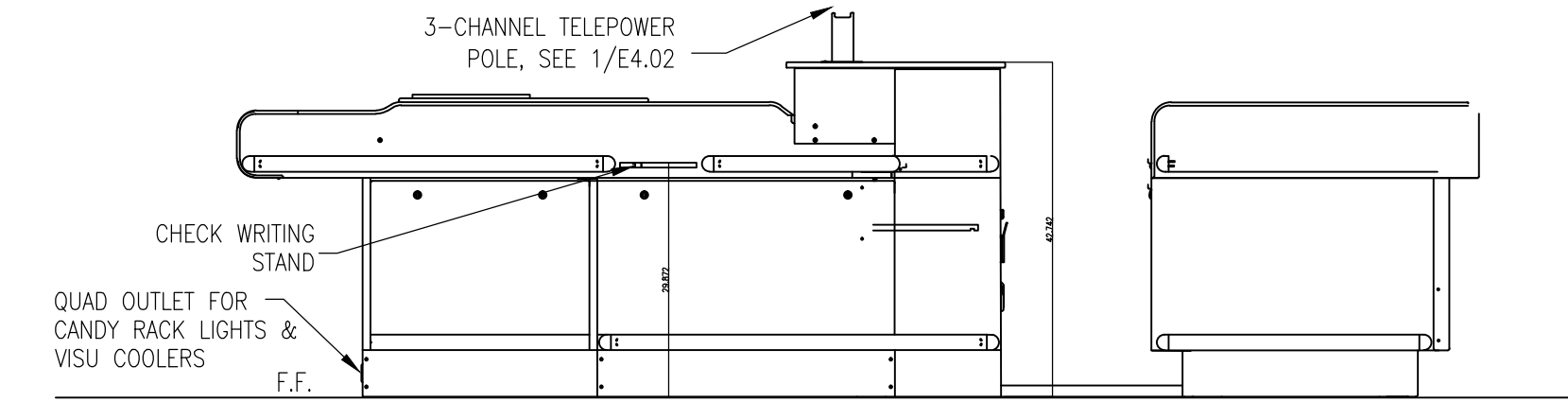
- SEE SHEET E4.03 FOR WORKROOM, CUSTOMER SERVICE AND CHECKOUT COMMUNICATION WIRING.
- MOUNT QUAD OUTLET FLUSH IN THE CHECKOUT STAND FOR THE VISU COOLER(S) AND LED CANDY RACK LIGHTING AT THIS LOCATION. RECEPTACLE TO BE MOUNTED 1'-4" A.F.F. IN THE SIDE NEAREST THE CASHIER AND ACCESSIBLE TO THE VISU COOLER CONNECTION. FACE PLATE TO BE PAINTED TO MATCH CHECKOUT STAND COLOR. COORDINATE LOCATION WITH PRE-WIRED CONTROLS MOUNTED INSIDE THE CHECKOUT.
- CASH REGISTER CIRCUITS SHALL BE PROVIDED WITH DEDICATED NEUTRAL AND GREEN ISOLATED GROUND.
- BOX CABLES SHALL BE INSTALLED WITH INSULATED THROATS AND APPROVED CONNECTORS.
- ELECTRICAL CONTRACTOR & FOOD LION COMMUNICATION VENDOR SHALL COORDINATE TELEPOLE LOCATIONS WITH LIGHTING & HVAC PRIOR TO INSTALLATION TO MINIMIZE INSTALLATION CONFLICTS.

ELECTRICAL WIRING KEY NOTES (X)

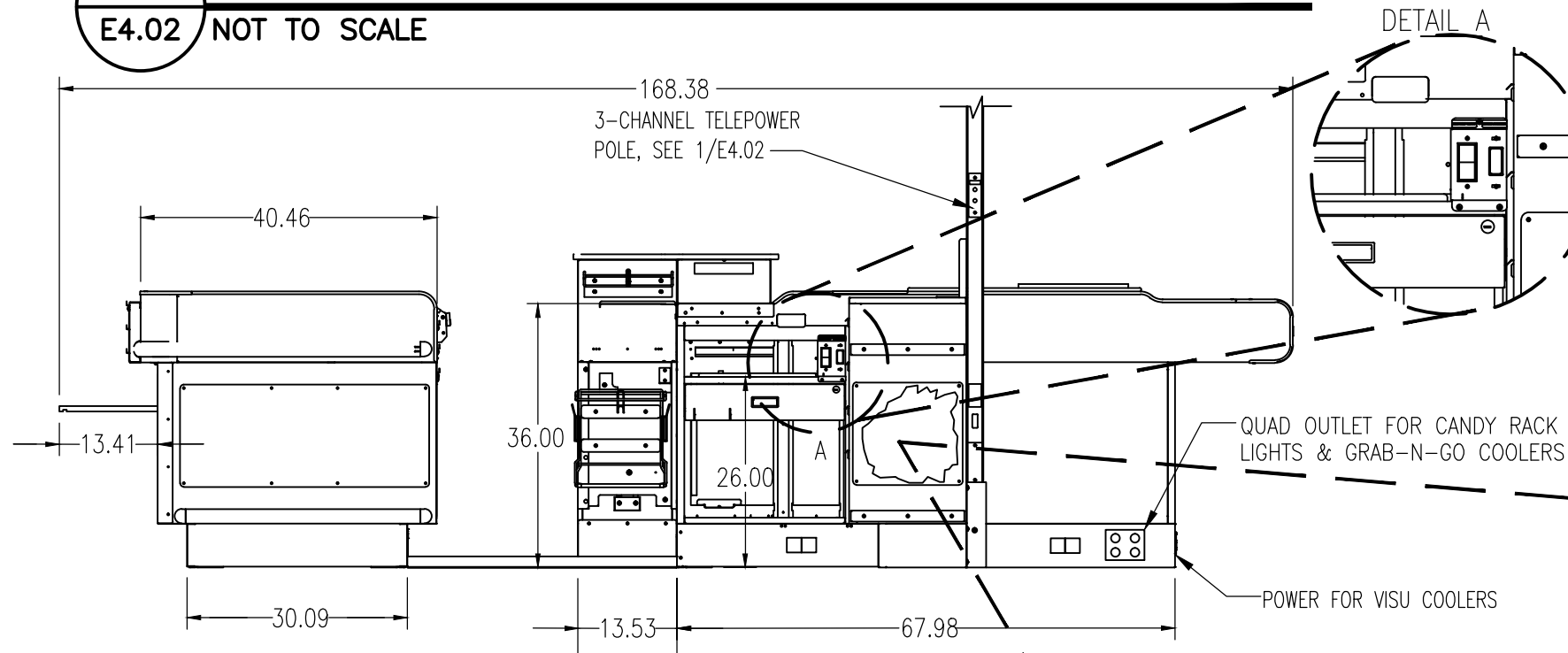
- EXISTING PANEL SCHEDULE FOR PANEL OW, CR NOT LABELED CORRECTLY. ELECTRICAL CONTRACTOR TO TRACE AND FIELD VERIFY EACH CIRCUIT IN PANEL OW AND PROPERLY LABEL CIRCUITS IN TYPED WRITTEN PANEL SCHEDULE IN PANEL.
- ELECTRICAL CONTRACTOR TO CONNECT POWER FOR NEW CHECK STAND "DIRTY POWER" AND VISU COOLERS TO EXISTING CIRCUITS IN PANEL OW MADE SPARE BY REMOVAL OF EXISTING CHECK STAND EQUIPMENT.
- ELECTRICAL CONTRACTOR TO RECONNECT RELOCATED EQUIPMENT TO EXISTING CIRCUITS AT NEW LOCATION. EXTEND EXISTING CIRCUITRY AS REQUIRED.
- VERIFY EXISTING CONDITIONS - CIRCUIT TO BE DEDICATED FEED FROM CR PANEL, RE-CIRCUIT AS NECESSARY.
- ELECTRICAL CONTRACTOR TO CONNECT NEW EQUIPMENT TO NEW CIRCUITS OR REUSE EXISTING CIRCUITS AS REQUIRED.
- CONDUITS ON THIS WALL TO BE RECESSED BEHIND GWB.
- DEDICATED 120V RECEPTACLES FOR NEXGEN DATA CABINET PROVIDED AND INSTALLED ABOVE CEILING BY SEPARATE OWNER CONTRACTOR.
- ELECTRICAL CONTRACTOR SHALL INSTALL A RECEPTACLE AND JUNCTION BOX IN WALL AT 81" FOR FL2GO MONITOR. CONDUIT AND PULL STRING TO BE INSTALLED FROM JUNCTION BOX TO CAMERA LOCATION OUTSIDE. COORDINATE EXACT OUTLET, JUNCTION BOX HEIGHT, AND CAMERA LOCATION WITH FOOD LION CONSTRUCTION MANAGER.

CHECKOUT WIRING LEGEND

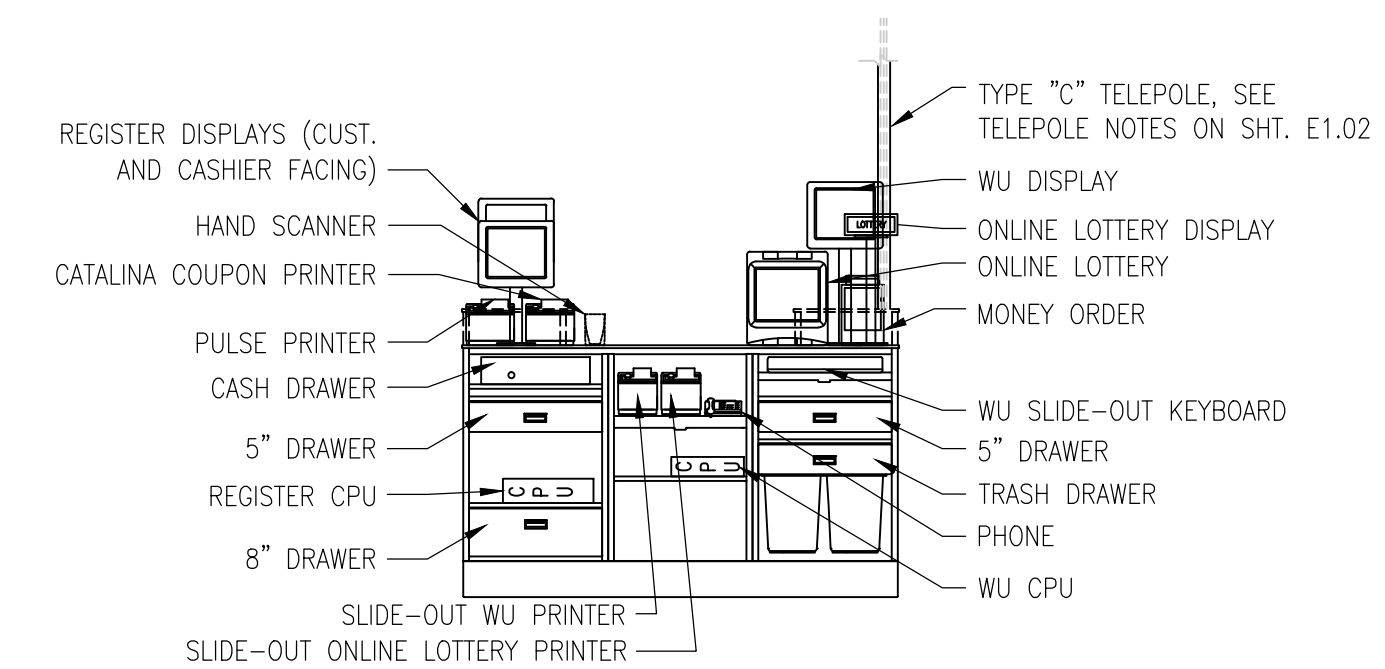
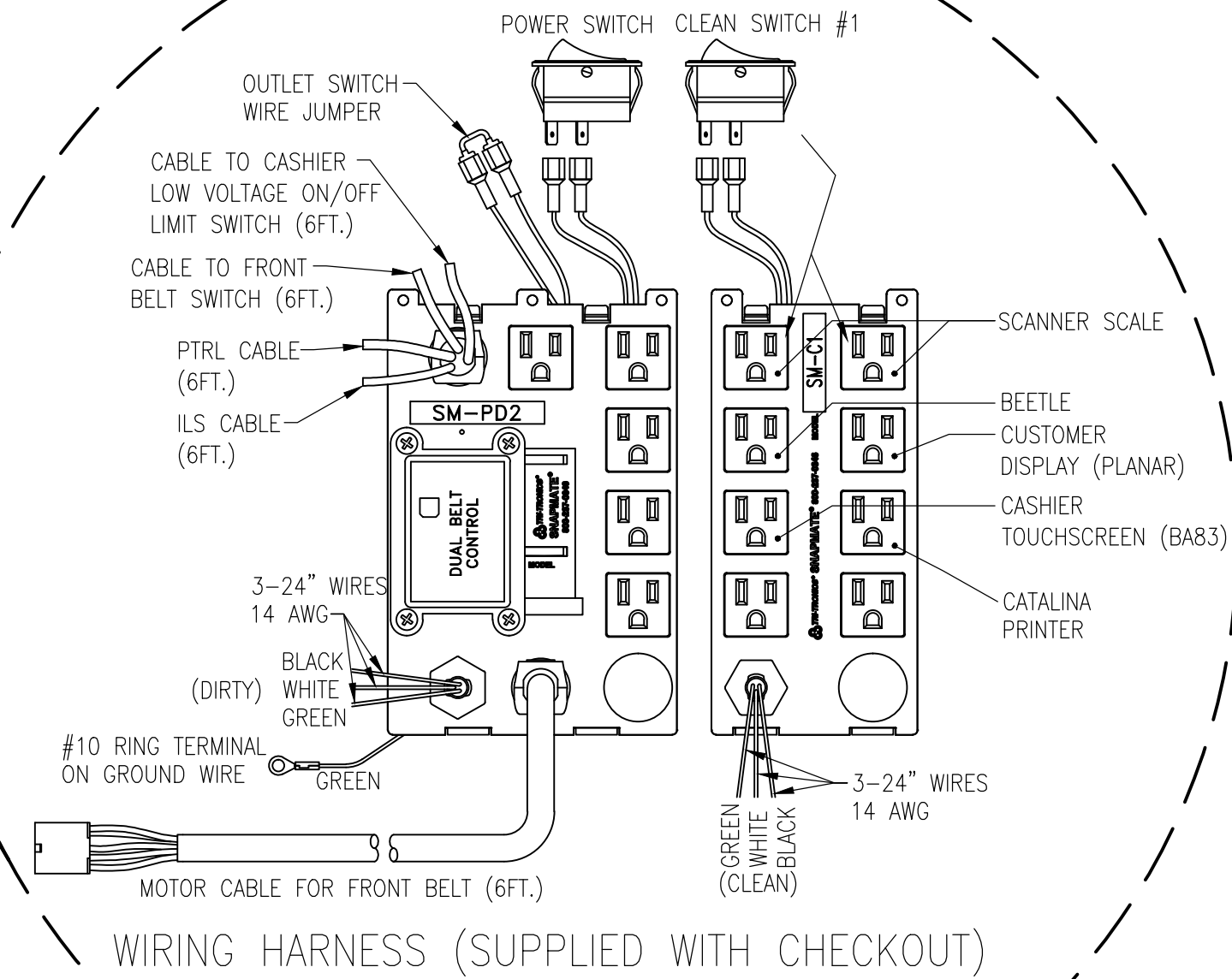
- DIRTY CIRCUIT No. 1 (BELT MOTOR, STAND LIGHT, CANDY RACK LIGHTS GEN. RECEPTACLES.)
- DIRTY CIRCUIT No. 2 (VISU COOLERS)
- CLEAN CIRCUIT No. 1 (REGISTER, CATALINA, DEBIT CARD, SCANNER & SCALE, SPARE RECEPT.)



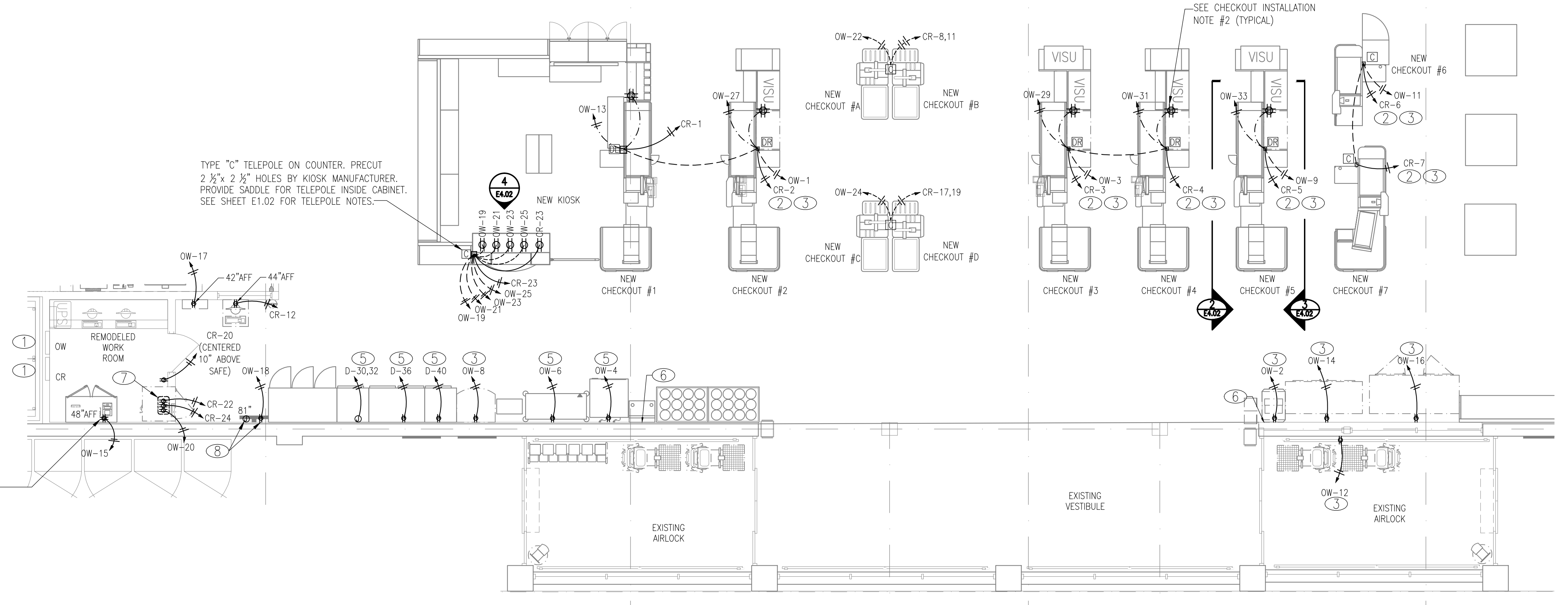
2 CUSTOMER SERVICE KIOSK ELECTRICAL ELEVATION
E4.02 NOT TO SCALE



3 ASSOCIATE SIDE ELECTRICAL ELEVATION
E4.02 NOT TO SCALE



4 CUSTOMER SERVICE KIOSK ELECTRICAL ELEVATION
E4.02 NOT TO SCALE



1 ENLARGED ELECTRICAL POWER PLAN
E4.02 SCALE : 3/16" = 1'-0"

PROFESSIONAL'S SEAL:



CORPORATE SEAL:

NO	DATE	REMARKS
00/00/00		COMMENTS

END

PROJECT NO: 0807FLMK20
DATE: 02/11/2020

41 OF 48

E4.02

CUSTOMER SERVICE, WORKROOM, & CHECKOUT POWER PLAN
CHECKED: DOD DRAWN: DFH