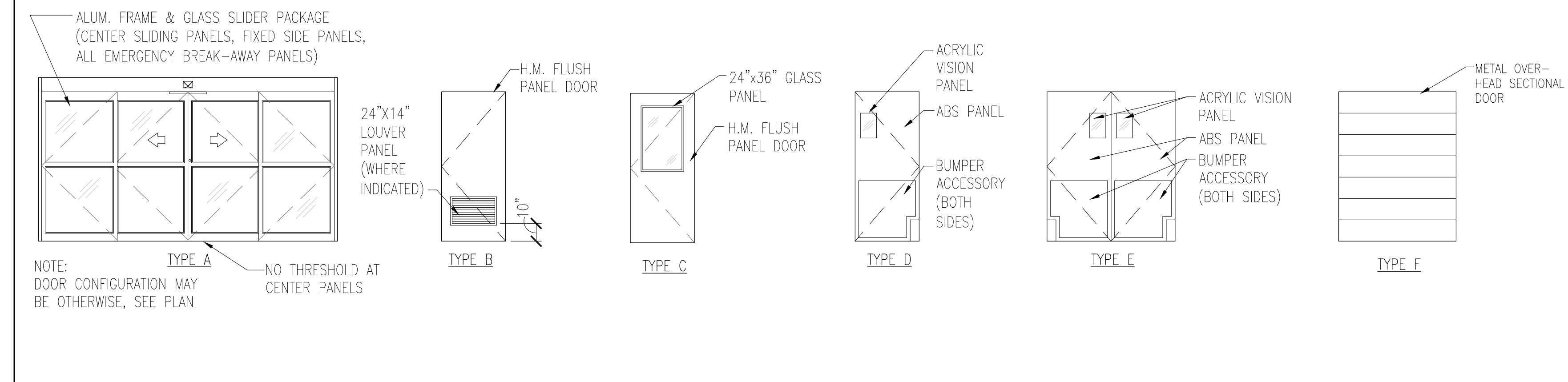


DOOR SCHEDULE

OPN'G NO.	TYPE	MATERIAL	DOOR				LOUVER	GLASS TYPE	FRAME		DETAILS				HROW. GROUP	REMARKS	OPN'G NO.
			WIDTH	HEIGHT	THICK.	GLASS			MATERIAL	HEAD	JAMB	SILL	T-HOLD	LABEL			
1	A	ALUM.	12'-0"	7'-8"	MFR.	~	E	ALUM.	~	~	~	~	~	007	SEE NOTE #3,4,5,6,11	1	
2	A	ALUM.	12'-0"	7'-8"	MFR.	~	E	ALUM.	~	~	~	~	~	007	SEE NOTE #3,4,5,6,11	2	
3	A	ALUM.	12'-0"	7'-8"	MFR.	~	C	ALUM.	~	~	~	~	~	007	SEE NOTE #3,4,5,6,11	3	
4	A	ALUM.	12'-0"	7'-8"	MFR.	~	C	ALUM.	~	~	~	~	~	007	SEE NOTE #3,4,5,6,11	4	
5	B	H.M.	3'-6"	7'-0"	1-3/4"	~	~	H.M.	~	~	~	~	~	001	SEE NOTE #5,9	5	
6	C	H.M.	3'-0"	7'-0"	1-3/4"	~	C	H.M.	~	~	~	~	~	010A	SEE NOTE #5,6,9,12	6	
7	C	H.M.	3'-0"	7'-0"	1-3/4"	~	C	H.M.	~	~	~	~	~	010A	SEE NOTE #5,6,9,12	7	
8	B	H.M.	3'-0"	7'-0"	1-3/4"	YES	~	H.M.	~	~	~	~	~	003	SEE NOTE #5,9	8	
9	B	H.M.	3'-0"	7'-0"	1-3/4"	YES	~	H.M.	~	~	~	~	~	003	SEE NOTE #5,9	9	
10	E	ABS	PAIR 3'-6"	8'-0"	MFR.	~	MFR.	H.M.	~	ASD-56	~	~	~	017	SEE NOTE #7,10	10	
11	F	STL.	7'-0"	8'-0"	MFR.	~	~	EXIST.	~	~	~	~	~	015	SEE NOTE #2,4,5	11	
12	F	STL.	7'-0"	8'-0"	MFR.	~	~	EXIST.	~	~	~	~	~	015	SEE NOTE #2,4,5	12	
13	E	ABS	PAIR 2'-0"	7'-0"	MFR.	~	MFR.	H.M.	~	ASD-56	~	~	~	017	SEE NOTE #7,8,10	13	
14	D	ABS	3'-0"	7'-0"	MFR.	~	MFR.	EXIST.	~	~	~	~	~	017	SEE NOTE #2,7,8	14	
15	E	ABS	PAIR 3'-0"	8'-0"	MFR.	~	MFR.	H.M.	~	ASD-56	~	~	~	017	SEE NOTE #7,10	15	
16	E	ABS	PAIR 3'-0"	8'-0"	MFR.	~	MFR.	H.M.	~	ASD-56	~	~	~	017	SEE NOTE #7,8,10	16	

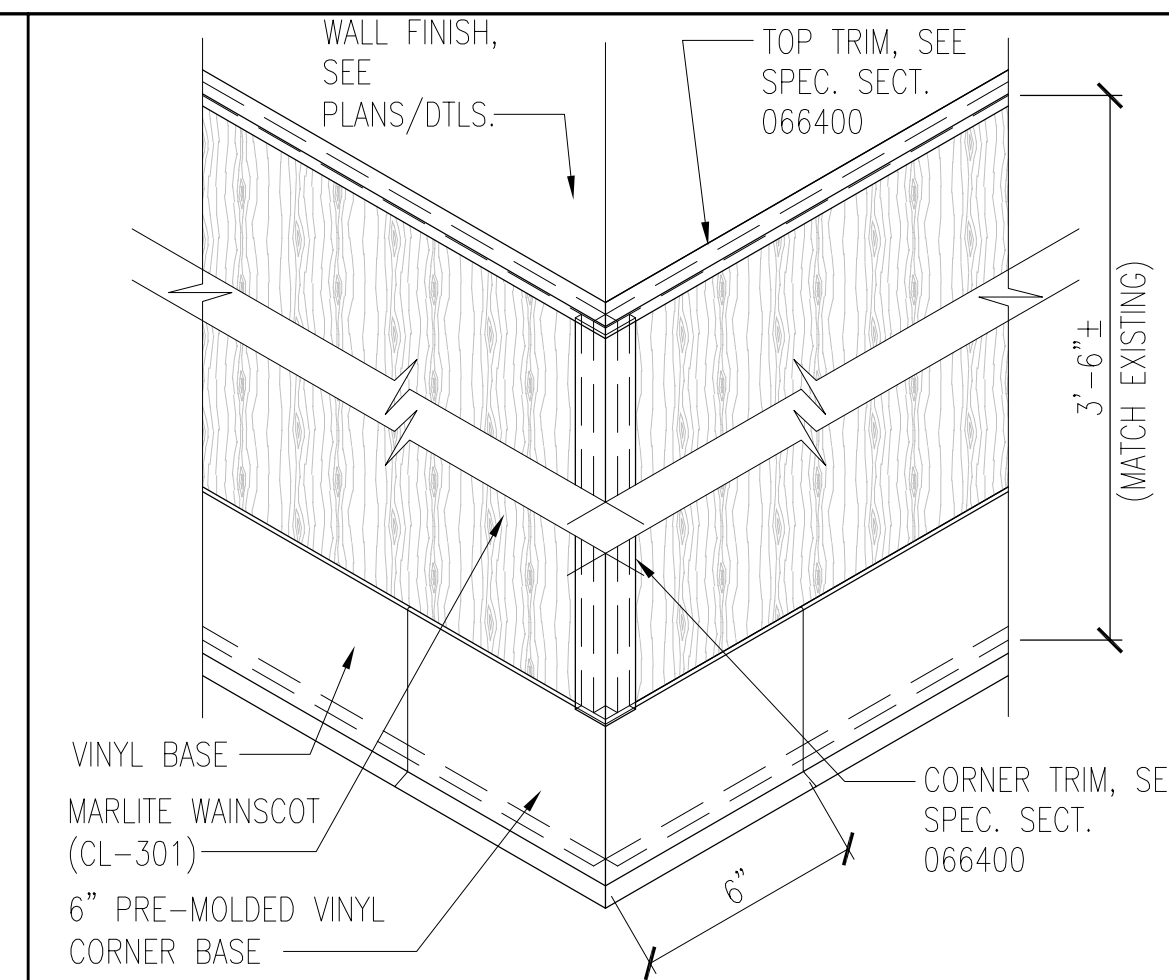
DOOR NOTES:

1. GENERAL NOTE FOR ALL DOORS: CONTRACTOR TO FIELD VERIFY ALL OPENING WIDTHS, HEIGHTS & WALL THICKNESS FOR SHOP DRAWINGS SUBMITTALS.
2. EXISTING FRAME TO REMAIN. CONTRACTOR TO FIELD VERIFY ALL MEASUREMENTS INCLUDING SUPPLYING HINGE PLACEMENTS (IF/WHERE OCCUR) FOR THE SHOP DRAWINGS SUBMITTAL. RE-PAINT FRAME TO MATCH EXISTING UNLESS OTHERWISE NOTED ON PLANS OR DECOR DRAWINGS.
3. CONTRACTOR TO FIELD VERIFY ALL ENTRANCE DOOR MEASUREMENTS FOR SHOP DRAWING SUBMITTAL.
4. CONTRACTOR TO COORDINATE INSTALLATION OF ALL SUPPLIER INSTALLED DOORS W/ SUPPLIER'S INSTALLER AND PROVIDE REQUIRED POWER PER ELECTRICAL DRAWINGS.
5. ALL DOOR HARDWARE IS FURNISHED AND INSTALLED BY CONTRACTOR UNLESS NOTED OTHERWISE. SEE SPECIFICATION SECTION 087100 FOR DOOR HARDWARE TYPES.
6. ALL DOOR GLAZING IS FURNISHED & INSTALLED BY CONTRACTOR UNLESS NOTED OTHERWISE. SEE SPECIFICATION SECTION 088000 FOR GLASS TYPES.
7. CONTRACTOR TO INSTALL OWNER SUPPLIED DOOR.
8. TRAFFIC DOOR PANELS TO BE INSULATED.
9. FURNISH & INSTALL NEW DOOR & FRAME. PAINT DOOR & FRAME TO MATCH EXISTING UNLESS OTHERWISE NOTED ON PLANS OR DECOR DRAWINGS.
10. FURNISH & INSTALL NEW DOOR FRAME. PAINT FRAME TO MATCH EXISTING UNLESS OTHERWISE NOTED ON PLANS OR DECOR DRAWINGS.
11. CONTRACTOR TO FURNISH & INSTALL NEW ALUMINUM & GLASS (SAME TYPE AS DOOR) TRANSOM MATCHING EXISTING HEIGHT/COLOR/STYLE IF UNABLE TO RE-USE EXISTING.
12. FURNISH & INSTALL ROLLER WINDOW SHADES OVER DOOR GLASS ON COUNSEL SIDE OF DOOR PER SPEC. SECT. 122413.



DOOR TYPES

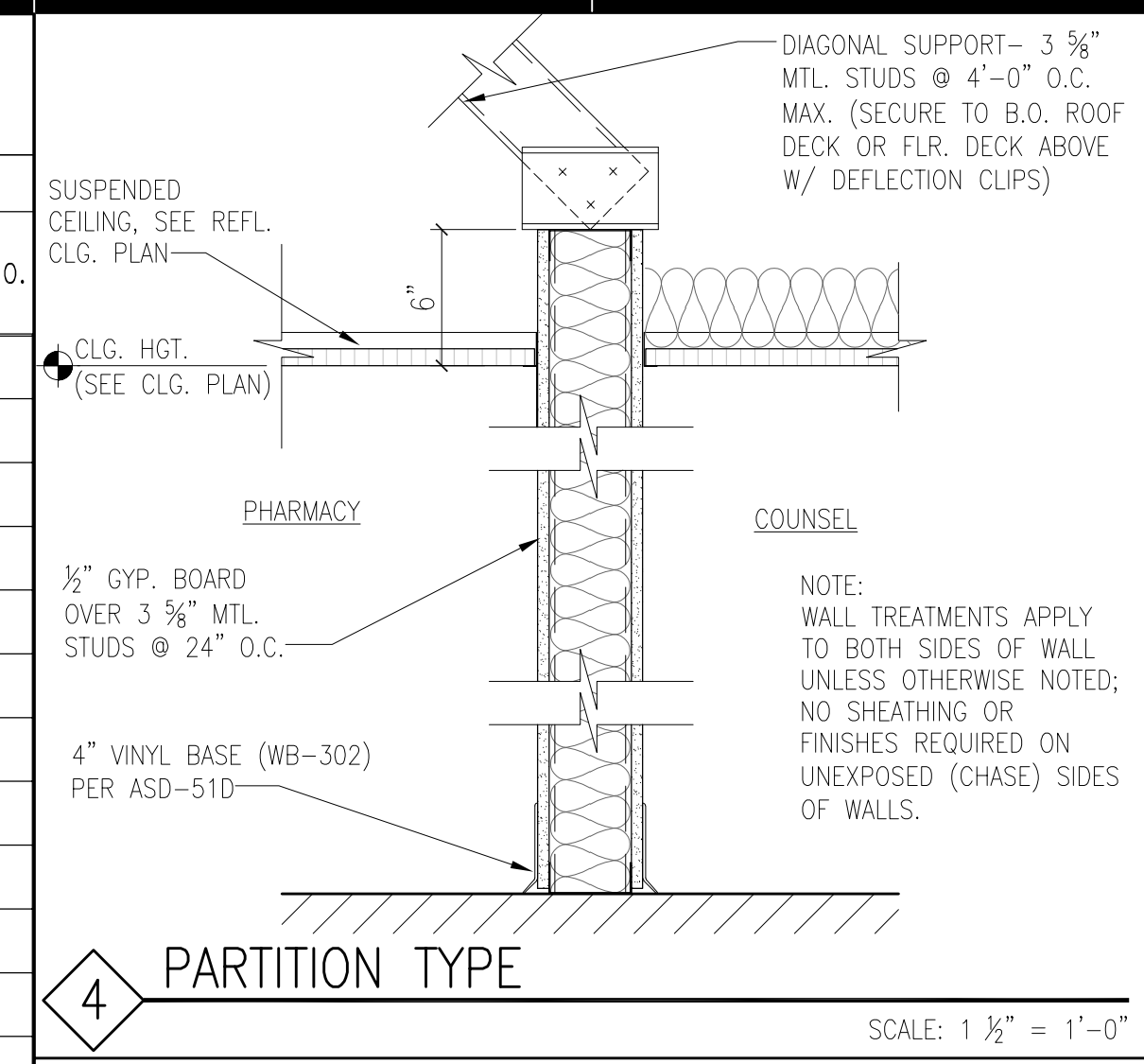
SEE ALSO SPECIFICATION SECTIONS: 016111-03, 016112, 055000, 081113, 083113, 083323, 083336, 083800, 084113, 084229, 087100, 088000



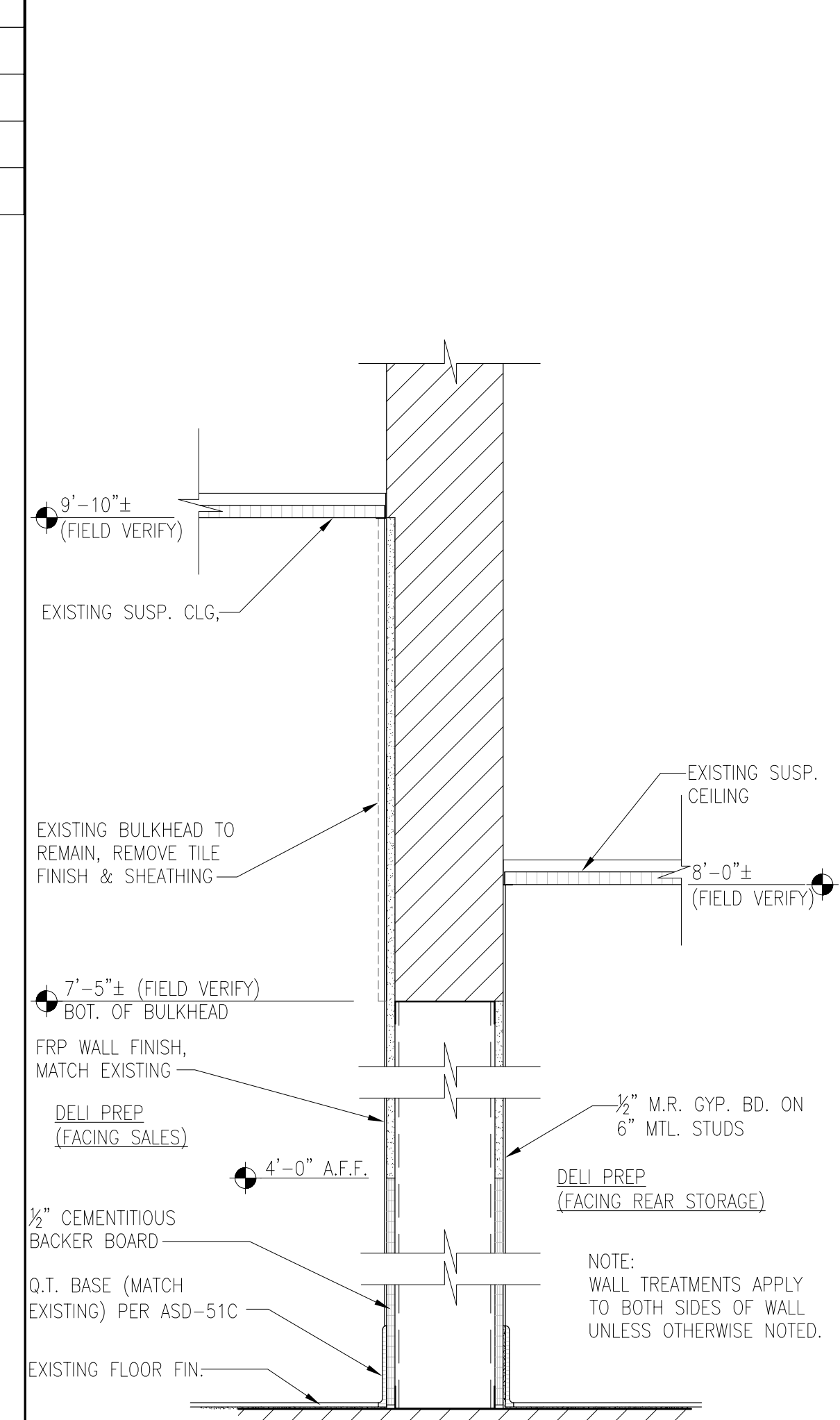
(2B) WAINSCOT CORNER DETAIL
NOT TO SCALE

GENERAL PARTITION NOTES

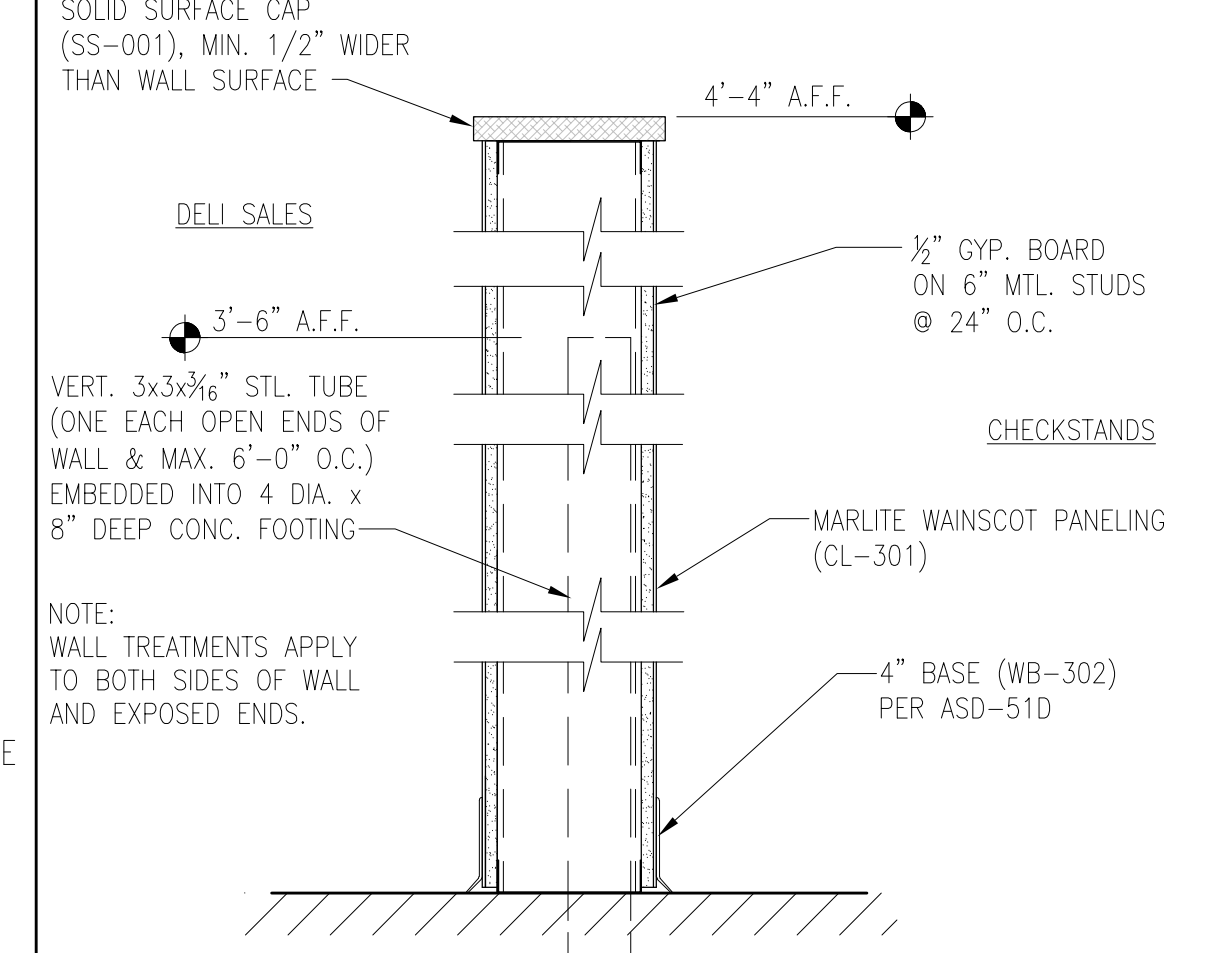
1. ALL WALL STUDS, WALL FURRING AND CEILING JOISTS TO BE COLD FORMED METAL MEMBERS PER SPECIFICATION SECTION 092216.
2. SEE SPECIFICATION SECTION 092216 FOR WALL STUD/FURRING MATERIAL GAUGE AND BRACING REQUIREMENTS.
3. RESTROOM CEILING JOISTS TO BE 16 GAUGE METAL.
4. ALL STUDS/FURRING RECEIVING M.R. GYPSUM BOARD, CEMENTITIOUS BOARD AND/OR FRP FINISH TO BE SPACED @ 16" O.C.. ALL OTHER APPLICATIONS TO BE 24" O.C. UNLESS NOTED OTHERWISE.
5. FURNISH & INSTALL FRP WOOD BLOCKING IN WALLS FOR ALL WALL MOUNTED FIXTURES AND ACCESSORIES PER SPECIFICATION SECTION 061053.
6. FURNISH & INSTALL GYPSUM AND CEMENTITIOUS SHEATHINGS PER SPECIFICATION SECTION 092900.
7. FURNISH & INSTALL RESTROOM FLOOR TILE, WALL TILE, COVE AND WATERPROOFING MEMBRANE PER SPECIFICATION SECTION 093000.
8. ALL STUDS/FURRING VERTICALLY UP TO BOTTOM OF ROOF OR MEZZANINE STRUCTURE/DECK TO BE STOPPED 1" SHORT AND CONNECTED W/ DEFLECTION CLIPS PER SPECIFICATION SECTION 092216.
9. FURNISH & INSTALL THERMAL/SOUND INSULATION BATTS PER SPECIFICATION SECTION 072100.
10. ALL NEW SHEATHING ON "WET" WALLS AND/OR RECEIVING FRP FINISH TO BE 1/2" CEMENTITIOUS BOARD UP TO 4'-0" A.F.F. AND 1/2" M.R. GYPSUM BOARD ABOVE UNLESS NOTED OTHERWISE.
11. SEE AS SHEET SERIES FOR ALL ASD DETAILS.



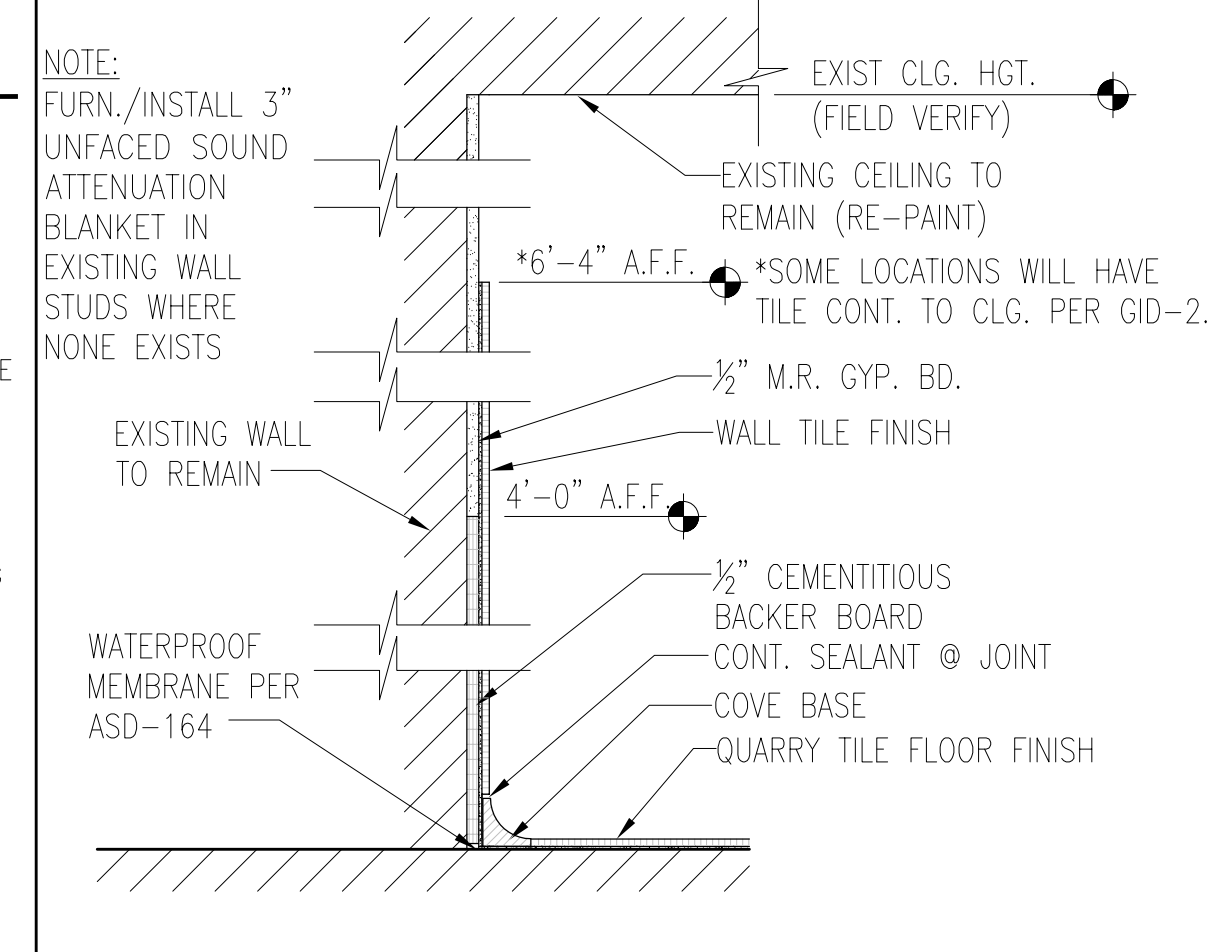
4 PARTITION TYPE
SCALE: 1 1/2" = 1'-0"



3 PARTITION TYPE
SCALE: 1 1/2" = 1'-0"



2 PARTITION TYPE
SCALE: 1 1/2" = 1'-0"



1 PARTITION TYPE
SCALE: 1 1/2" = 1'-0"

CAPSTONE
project services, plc
2211 WIDMAN WAY, SUITE 220
FORT MYERS, FL. 33901

COMMONWEALTH OF FLORIDA
JOHN MARK HUGHES
Lic. No. 0401 014166
ARCHITECT

6-1-2020

CAPSTONE
PROJECT SERVICES, PLC
ARCHITECTURAL & CONSTRUCTION SERVICES
OFFICE LOCATIONS: ROANOKE, VA & FT. MYERS, FL.

A REMODEL FOR:
KROGER R-215
7480 LEE HIGHWAY
FAIRLAWN, VA

PROJECT
6-1-2020
DATE
CONSTRUCTION SET

DOOR SCHEDULE, SECTIONS AND DETAILS

REVISIONS	DATE	DESCRIPTION

PROJECT NO: CPS2020-051.4
CAD DWG FILE: CPS2020-051.4-A3.1
DRAWN BY: JMH
CHK'D BY: JMH/LEN

A3.1