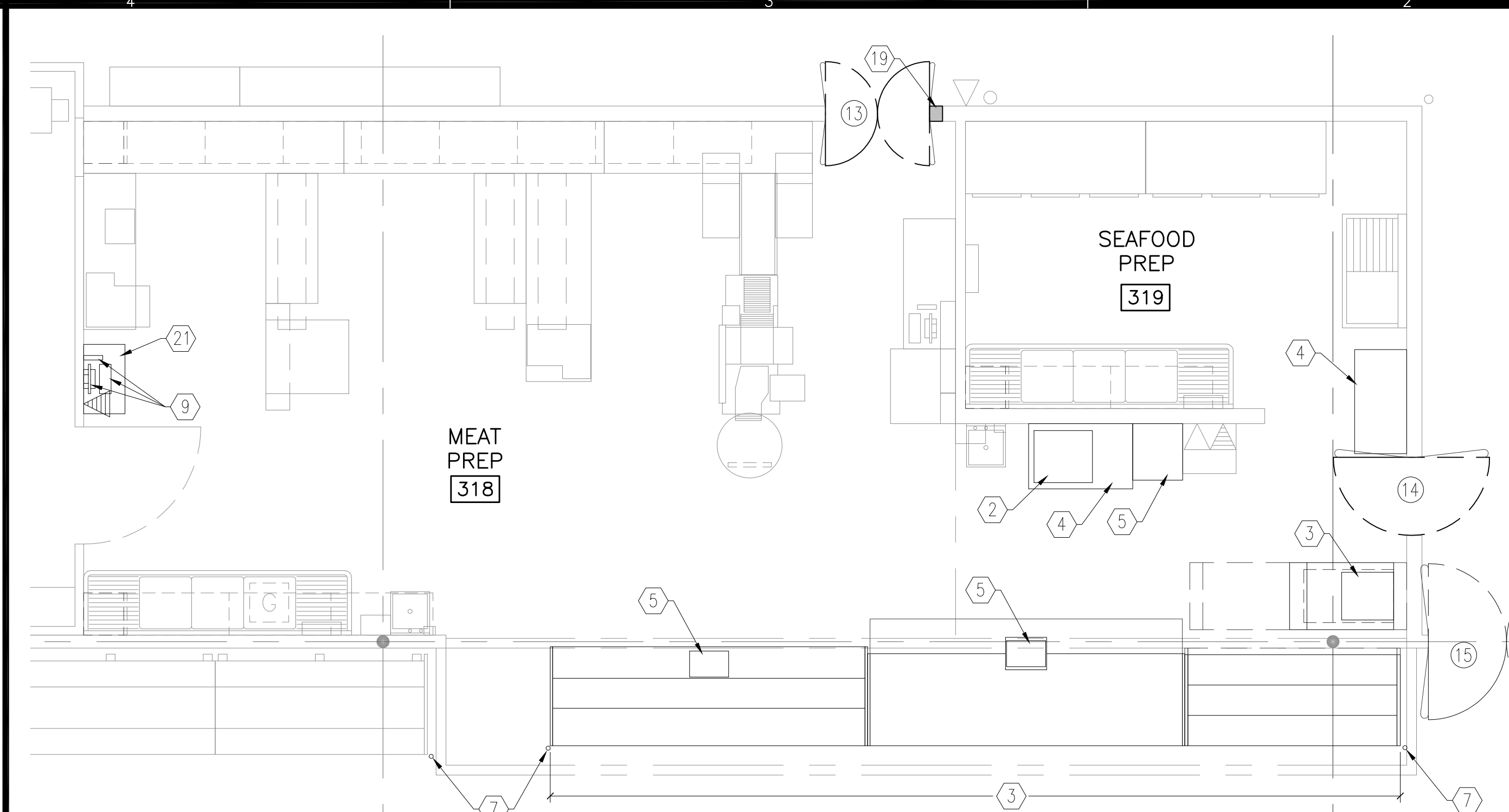
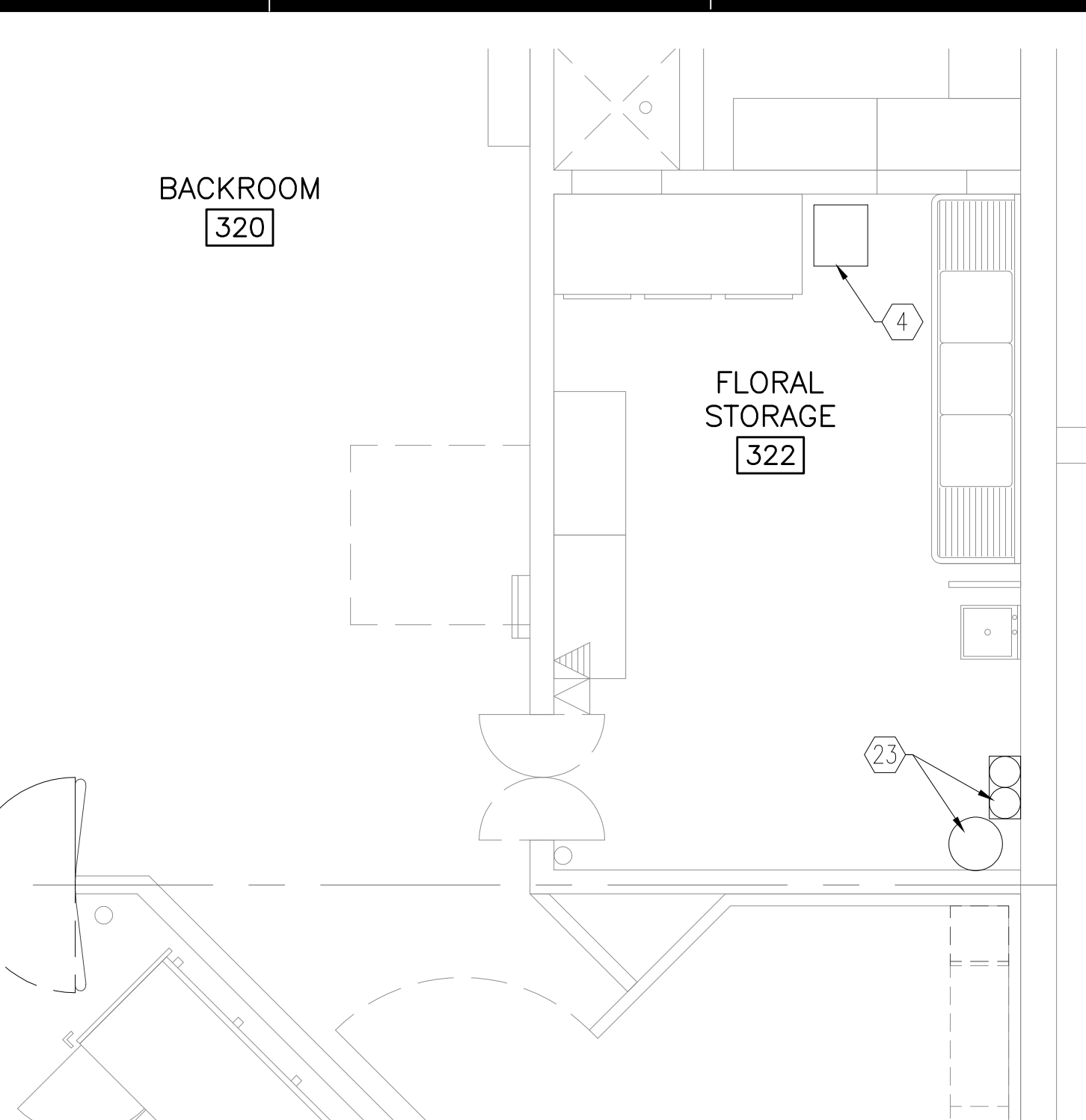


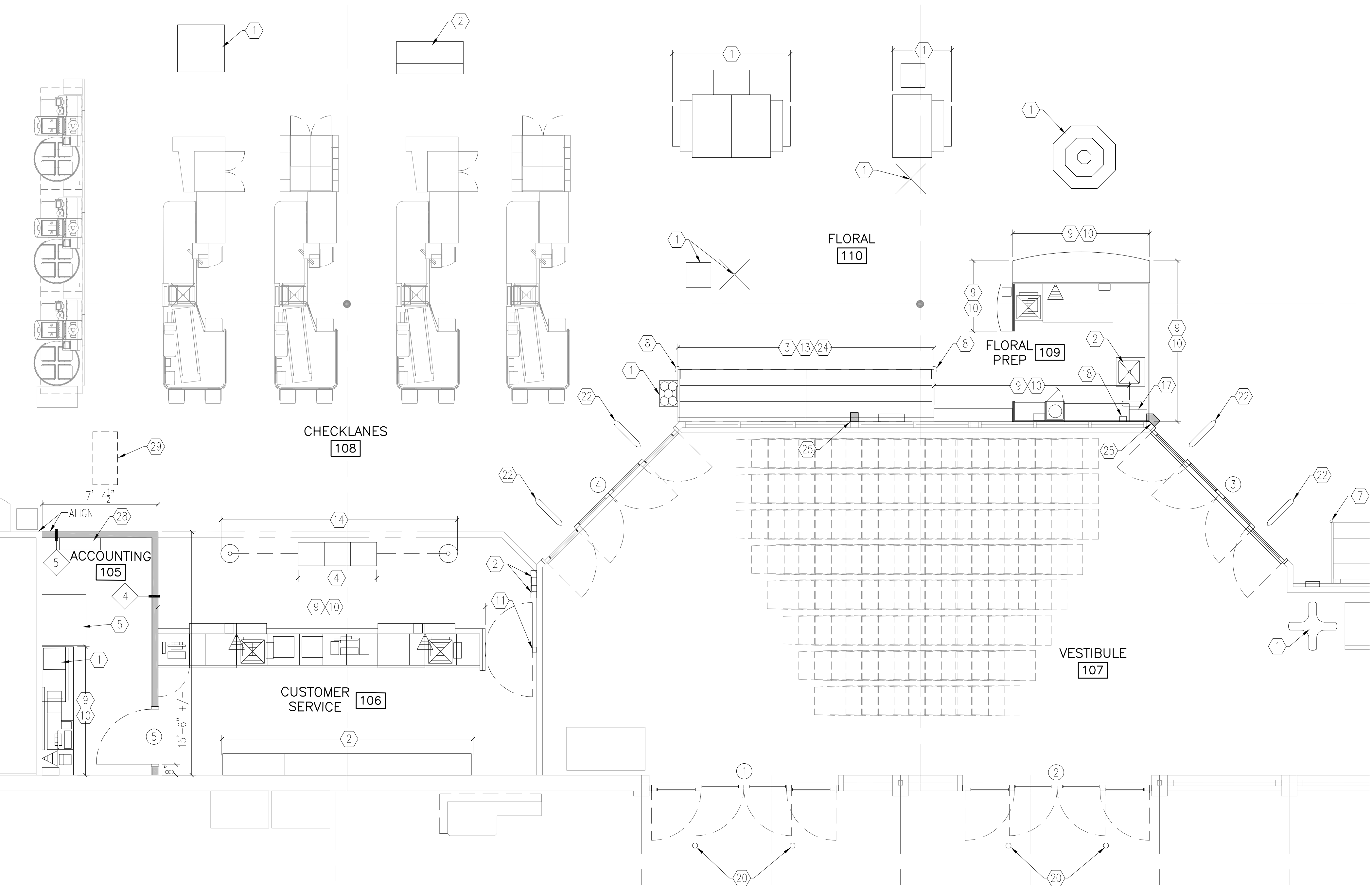
6D ENLARGED FLOOR PLAN SCALE: 1/4" = 1'-0"



SEAFOOD 215



1B ENLARGED FLOOR PLAN SCALE: 1/4" = 1'-0"



5A ENLARGED FLOOR PLAN SCALE: 1/4" = 1'-0"

PLAN NOTES

- NEW FIXTURE TO BE FURNISHED BY KROGER AND INSTALLED BY G.C. PER SPEC. SECT. 114113. NO ELECTRICAL OR PLUMBING WORK REQUIRED.
- NEW FIXTURE TO BE FURNISHED BY KROGER AND INSTALLED BY G.C. PER SPEC. SECT. 114113. SEE PLUMBING AND/OR ELECTRICAL FOR MORE INFORMATION.
- NEW FIXTURE TO BE FURNISHED BY KROGER AND INSTALLED BY REFRIGERATION CONTRACTOR (R.C.) PER SPEC. SECT. 114122. SEE PLUMBING, ELECTRICAL AND/OR REFRIGERATION DRAWINGS FOR MORE INFORMATION. G.C. TO COORDINATE.
- RELOCATED FIXTURE TO BE INSTALLED BY G.C. PER SPEC. SECT. 114113. NO ELECTRICAL OR PLUMBING WORK REQUIRED.
- RELOCATED FIXTURE TO BE INSTALLED BY G.C. PER SPEC. SECT. 114113. SEE PLUMBING AND/OR ELECTRICAL FOR MORE INFORMATION.
- RELOCATED FIXTURE TO BE INSTALLED BY R.C. PER SPEC. SECT. 114122. SEE PLUMBING, ELECTRICAL AND/OR REFRIGERATION DRAWINGS FOR MORE INFORMATION. G.C. TO COORDINATE.
- FURNISH & INSTALL NEW STAINLESS STEEL REMOVABLE POST CORNER GUARD PER ASD-19 & SPEC. SECT. 114113-00.
- FURNISH & INSTALL NEW STAINLESS STEEL CASE CORNER GUARDS PER ASD-160 & SPEC. SECT. 114113-00.
- OWNER TO FURNISH & INSTALL COMPUTER / TERMINAL / REGISTER / P.O.S.. CONTRACTOR TO SUPPLY POWER AS REQUIRED AND COORDINATE INSTALLATION. SEE ELECTRICAL DRAWINGS.
- INSTALL NEW KROGER FURNISHED MILLWORK. COORDINATE WITH ELECTRICAL DRAWINGS AND MILLWORK SHOP DRAWINGS. APPLY VINYL BASE TO BOTTOM SURFACES EXPOSED TO SALES FLR. SIDE PER ASD 51-D.
- INSTALL NEW MILLWORK GATE, FURNISHED BY KROGER. COORDINATE WITH MILLWORK SHOP DRAWINGS. PROVIDE SOLID FRT WOOD BLOCKING IN WALL.
- INSTALL NEW KROGER FURNISHED MILLWORK. COORDINATE WITH ELECTRICAL DRAWINGS AND MILLWORK SHOP DRAWINGS.. G.C. TO FURNISH/INSTALL NEW VINYL BASE ON SURFACES EXPOSED TO SALES FLOOR TO MATCH SALES FLOOR DECOR PER ASD-51D.
- FURNISH & INSTALL REFRIGERATED CASE CLOSURES PER GISD-2 & SPEC. SECT. 114113.
- RELOCATED KROGER QUEUING BAND POST(S) TO BE INSTALLED.
- FURNISH & INSTALL NEW PLASTIC LAMINATE COVERED 3/4" PLYWOOD FILLER AS REQUIRED PER SPEC. SECT. 114113. APPLY VINYL BASE TO BOTTOM SURFACES EXPOSED TO SALES FLR. SIDE PER ASD 51-D. PROVIDE SHOP DRAWINGS TO KROGER P.M. FOR APPROVAL PRIOR TO FABRICATION.
- INSTALL KROGER FURNISHED NEW WALL ATTACHED FREEZER/COOLER/PREP RM. SHELVING PER GISD-16A & SPEC. SECT. 114113-15. FURNISH & INSTALL NEW BLOCKING WHERE REQUIRED.
- INSTALL NEW KROGER FURNISHED PAPER TOWEL DISPENSER PER SPEC. SECT. 102813.
- INSTALL NEW KROGER FURNISHED SOAP DISPENSER PER SPEC. SECT. 102813.
- FURNISH & INSTALL NEW MATERIALS (MTL STUDS @ 24" O.C., SHEATHING & FINISHES) TO FILL OPENING BESIDE NEW DOOR OPENING FRAME PROVIDING A SMOOTH/FLUSH TRANSITION. ALL MATERIALS TO MATCH EXISTING ADJACENT. PROVIDE 1/2" CEMENT BACKER BD. IN LIEU OF GYP. BD. FOR LOWER 48" ON PREP ROOM SIDE OF WALL.
- VENDOR SUPPLIED SANITIZER STATION. CONTRACTOR TO COORDINATE & SUPPLY WATER AS REQUIRED. SEE PLUMBING DRAWINGS.
- INSTALL KROGER FURNISHED WALL MOUNTED COMPUTER DESK PER GISD-15A.
- NEW SENSORMATIC SECURITY GATES & CONTROLS. FURNISHED & INSTALLED BY KROGER. G.C. TO COORDINATE & SUPPLY POWER PER ELECTRICAL DRAWINGS.
- INSTALL KROGER FURNISHED WATER FILTRATION SYSTEM PER PLUMBING DRAWINGS.
- INSTALL KROGER FURNISHED BALLOON DISPLAY ON TOP OF REFRIGERATED CASE.
- FURNISH & INSTALL NEW PIPE/UTILITY CHASE FROM 6" ABOVE FINISHED CEILING DOWN TO TOP OF NEW LOW WALL/REFRIGERATED CASE USING 1/2" GYP. BD. SHEATHING ON ALL EXPOSED SURFACES OVER MTL STUDS (SIZE AS NEEDED TO ACCOMMODATE UTILITY REQUIREMENTS AND MATCH WIDTH OF EXISTING ADJACENT PLASTER BETWEEN WINDOWS/DOOR. PAINT TO MATCH ADJACENT WALL COLOR. MODIFY EXISTING CEILING PANELS/GRID PENETRATION AS REQUIRED FOR NEW WORK.
- FURNISH & INSTALL NEW ENTRANCE DOOR ROLLER POSTS PER ASD-20 & SPEC. SECT. 102600.
- NEW SHELVING/END CAPS TO BE FURNISHED BY KROGER AND INSTALLED BY G.C. PER SPEC. SECT. 114113. G.C. TO FURNISH POWER AS REQUIRED PER ELECTRICAL DRAWINGS.
- NEW WALL MTD. HVAC UNIT (INDOOR SYSTEM COMPONENT) TO BE INSTALLED BY G.C.. SEE HVAC & ELECTRICAL DRAWINGS FOR ADDITIONAL REQUIREMENTS.
- NEW HVAC UNIT (OUTDOOR SYSTEM COMPONENT), ON ROOF ABOVE, TO BE INSTALLED BY G.C.. FURNISH & INSTALL NEW ROOF MOUNTING RAIL SYSTEM PER ASD-89/AS.1. LOCATION AS PER HVAC DRAWINGS & ON-SITE COORDINATION W/ EXISTING CONDITIONS. SEE HVAC & ELECTRICAL DRAWINGS FOR ADDITIONAL REQUIREMENTS.

GENERAL NOTES

- SEE SHEET A3.1 FOR PARTITION DETAILS.
- SEE SHEET A3.1 FOR DOOR SCHEDULE.
- INSTALL SOLID FRT WOOD BLOCKING IN ALL WALL LOCATIONS WHERE WALL MOUNTED FIXTURES, EQUIPMENT AND/OR ACCESSORIES ARE TO BE LOCATED. INCLUDING BUT NOT EXCLUSIVE TO: FLY TRAPPERS AND SCONCES MILLWORK WALL DESKS FIRE EXTINGUISHERS
- INSTALL KROGER FURNISHED FIRE EXTINGUISHERS. COORDINATE LOCATIONS WITH BUILDING OFFICIAL AND FIRE OFFICIAL.



**CAPSTONE PROJECT SERVICES, PLC**  
ARCHITECTURAL & CONSTRUCTION SERVICES  
OFFICE LOCATIONS: ROANOK, VA & FT. MYERS, FL

A REMODEL FOR:  
**KROGER R-215**  
7480 LEE HIGHWAY  
FAIRLAWN, VA

PROJECT DATE: 6-1-2020  
CONSTRUCTION SET

ENLARGED FLOOR PLANS

REVISIONS	DATE	DESCRIPTION

PROJECT NO: CPS2020-051.4  
CAD DWG FILE: CPS2020-051.4-A4.2  
DRAWN BY: JMH  
CHK'D BY: JMH/LEN

**A4.2**