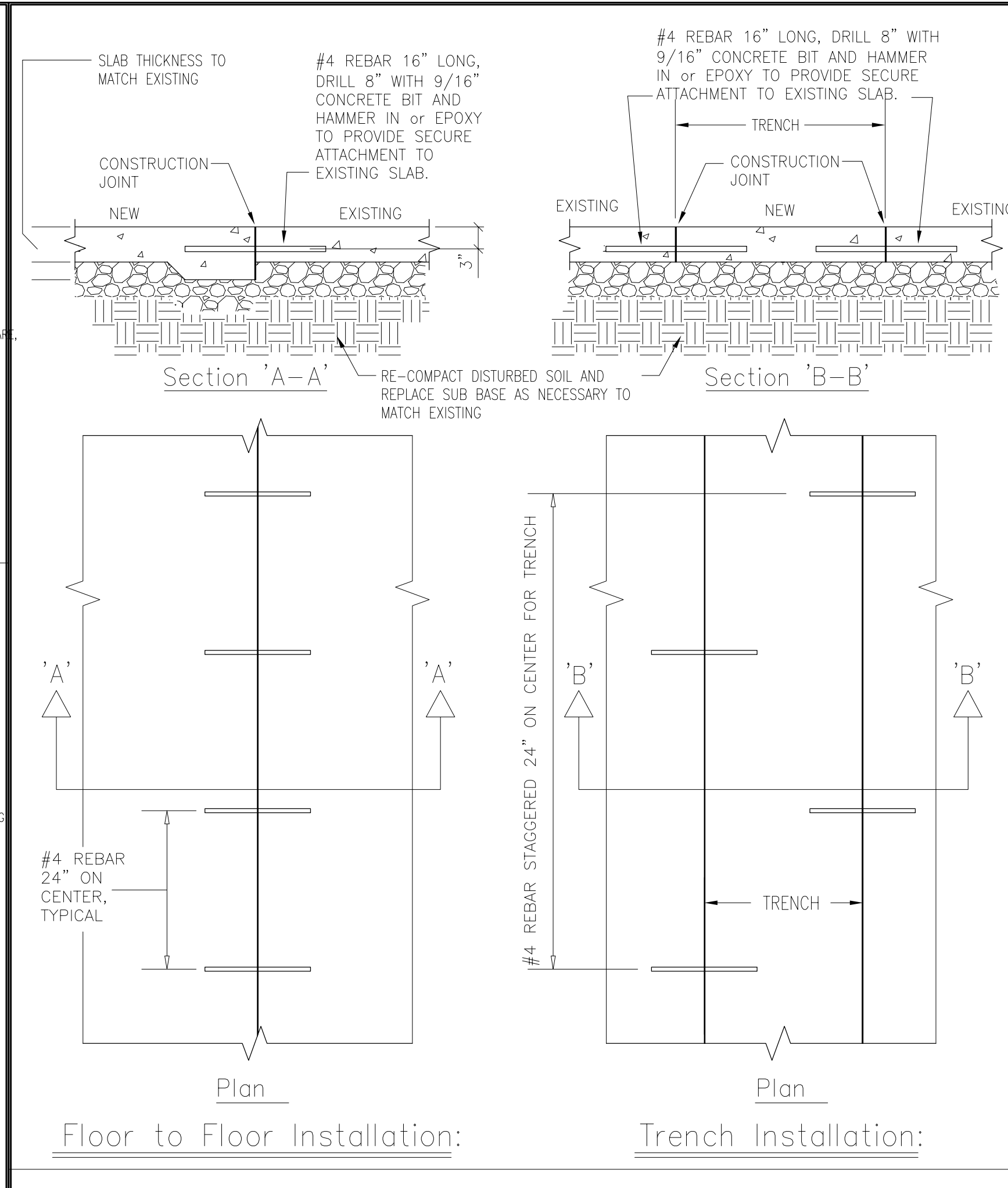
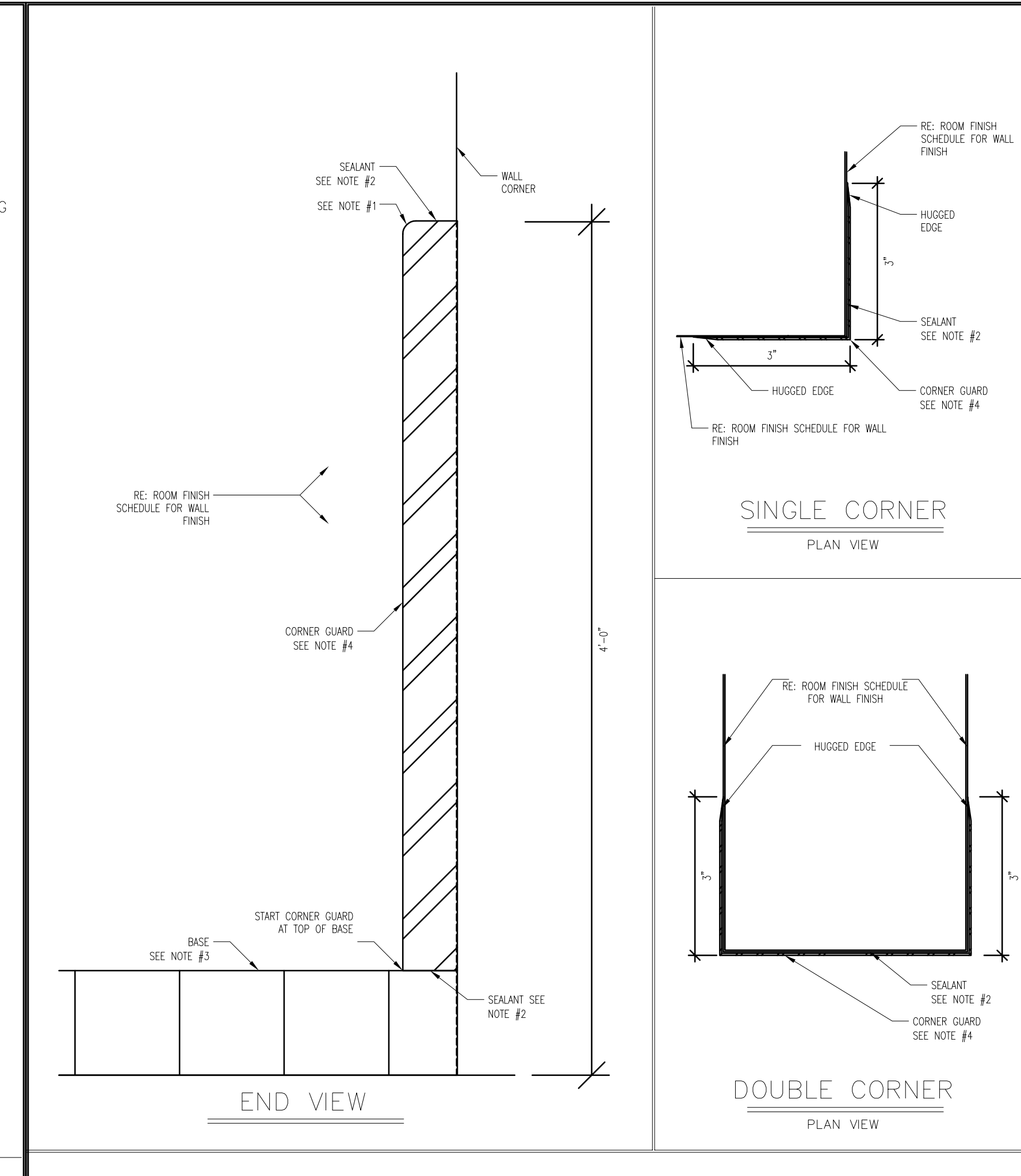


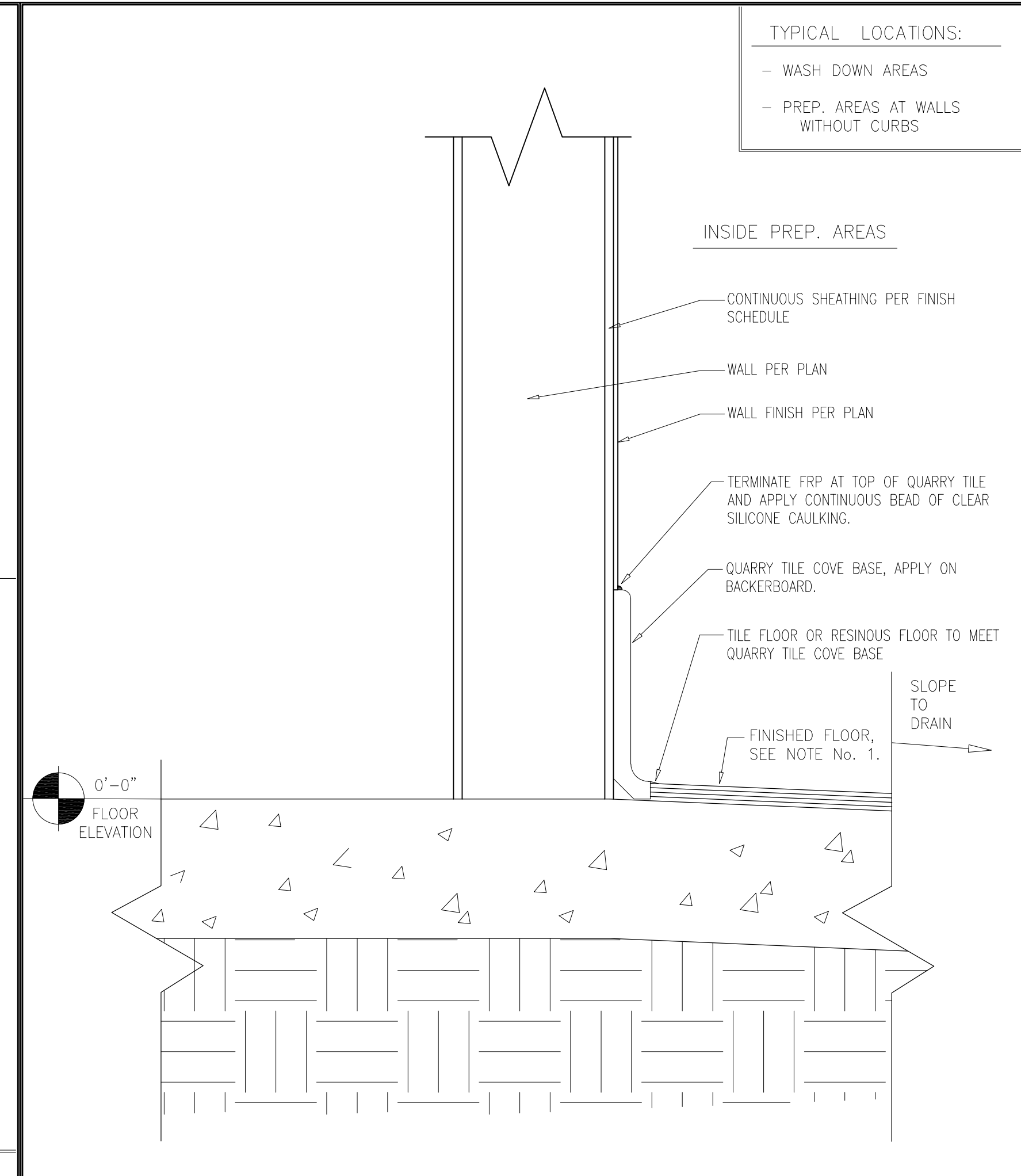
PREFABRICATED NON-STRUCTURAL PLATFORM CURB	DATE: 01/30/20
MASTER SPECIFICATION DETAIL	SCALE: NONE DRAWN: SJL
ASD-89	



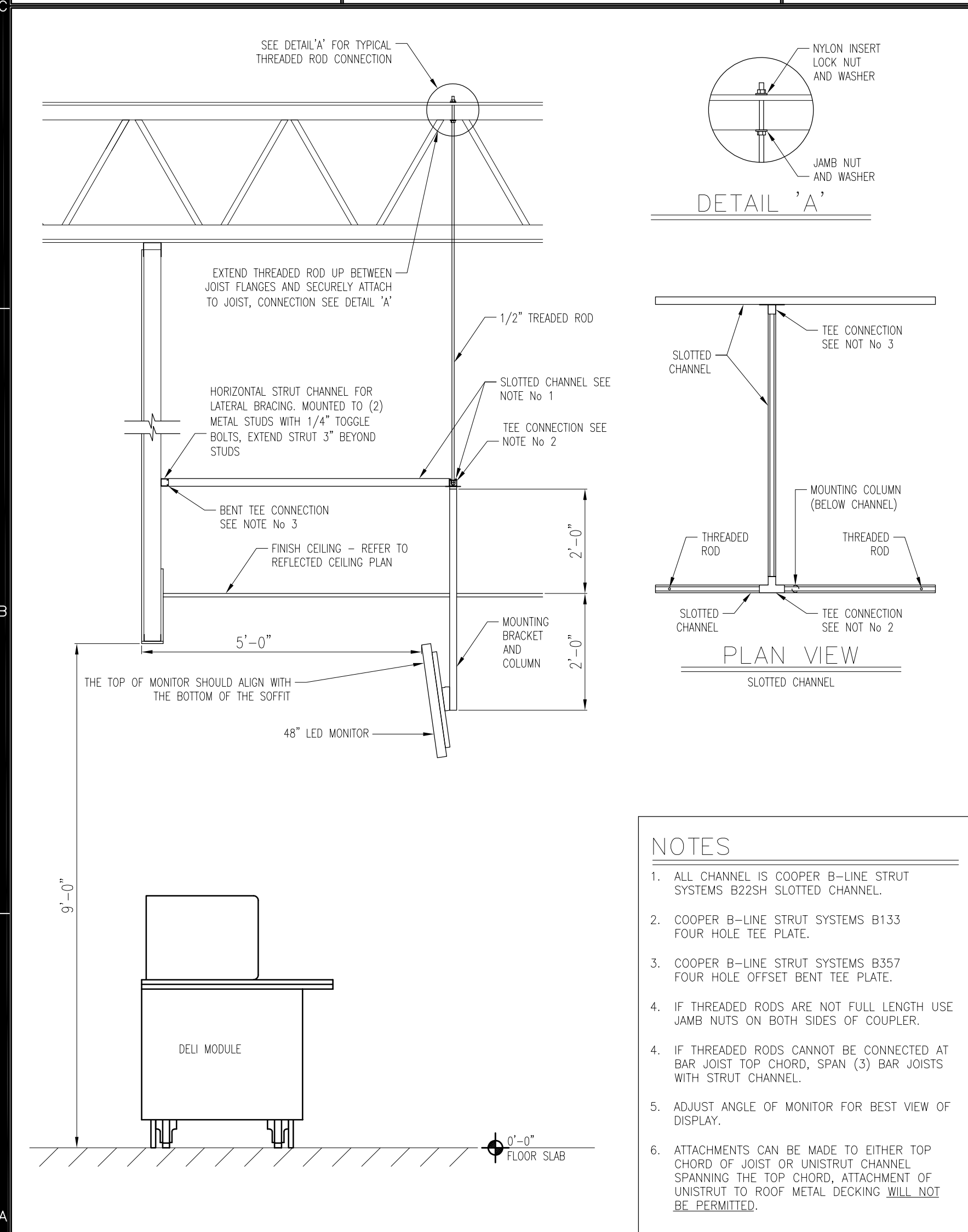
CONCRETE FLOOR REPLACEMENT AT EXISTING SLAB	DATE: 11/10/11
MASTER SPECIFICATION DETAIL	SCALE: NONE DRAWN: ZAW
ASD-69	



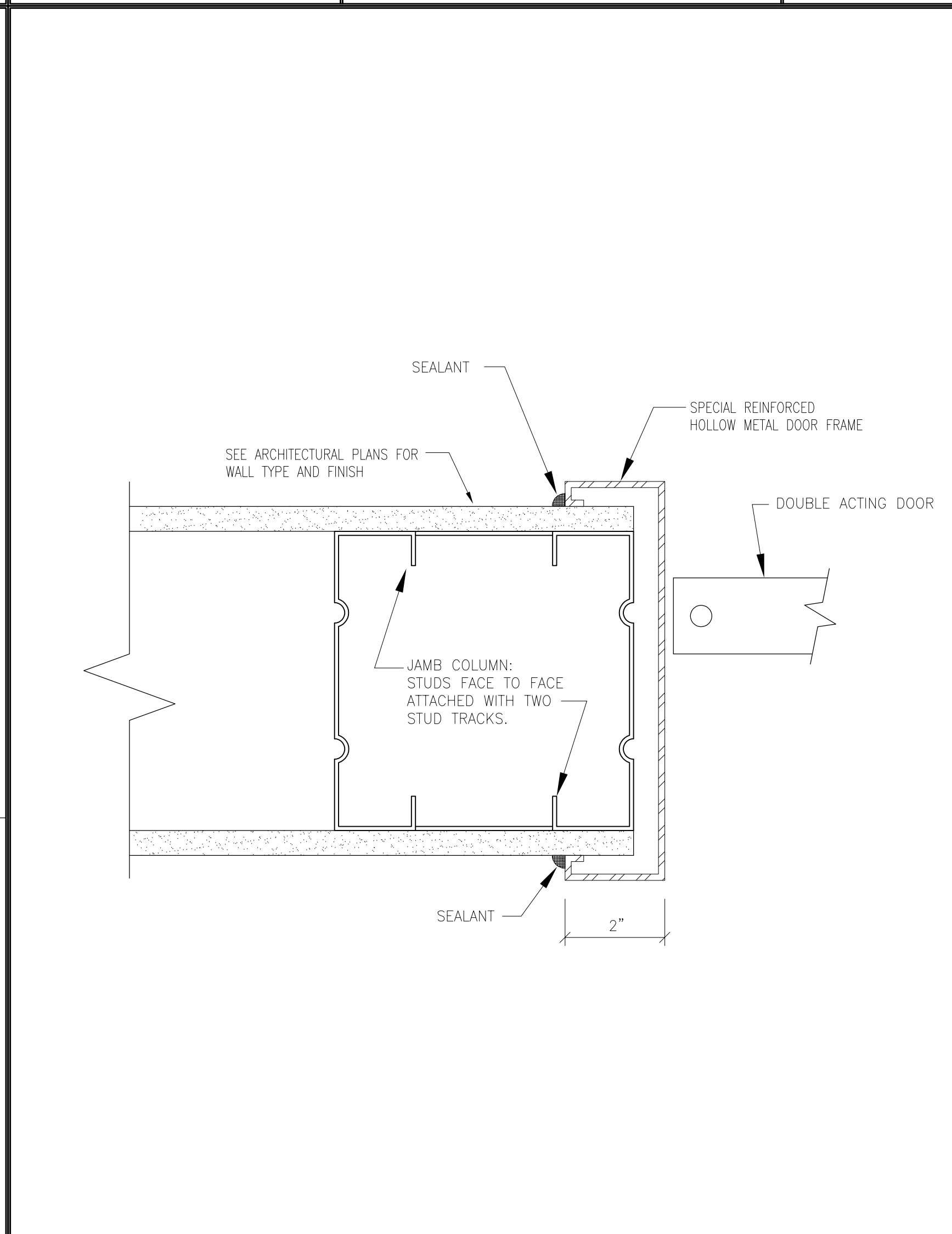
STAINLESS STEEL CORNER GUARD	DATE: 7/29/13
MASTER SPECIFICATION DETAIL	SCALE: NONE DRAWN: TMW
ASD-55A	



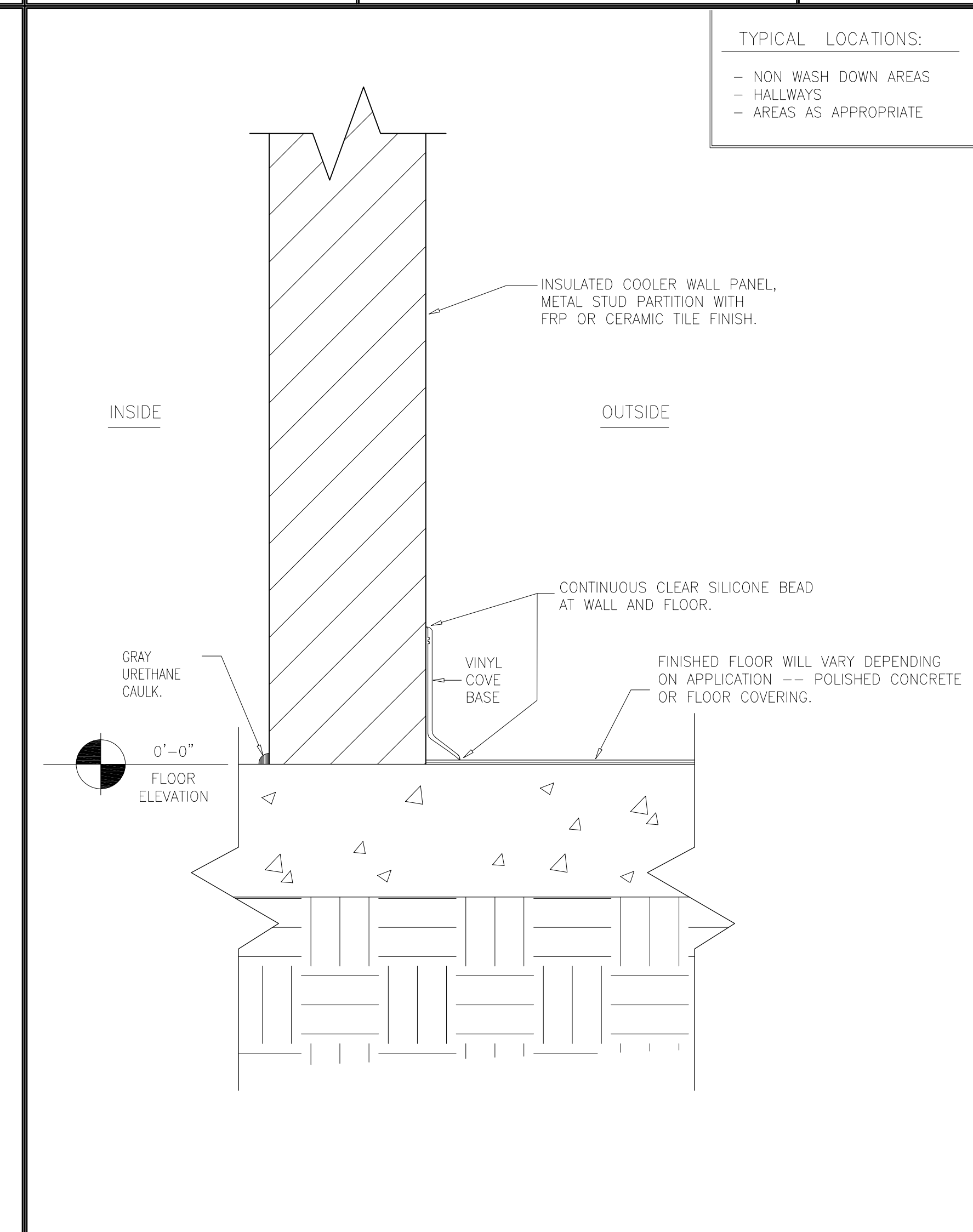
WALL TO FLOOR BASE TYPE-C	DATE: 11/10/11
MASTER SPECIFICATION DETAIL	SCALE: NONE DRAWN: ZAW
ASD-51C	



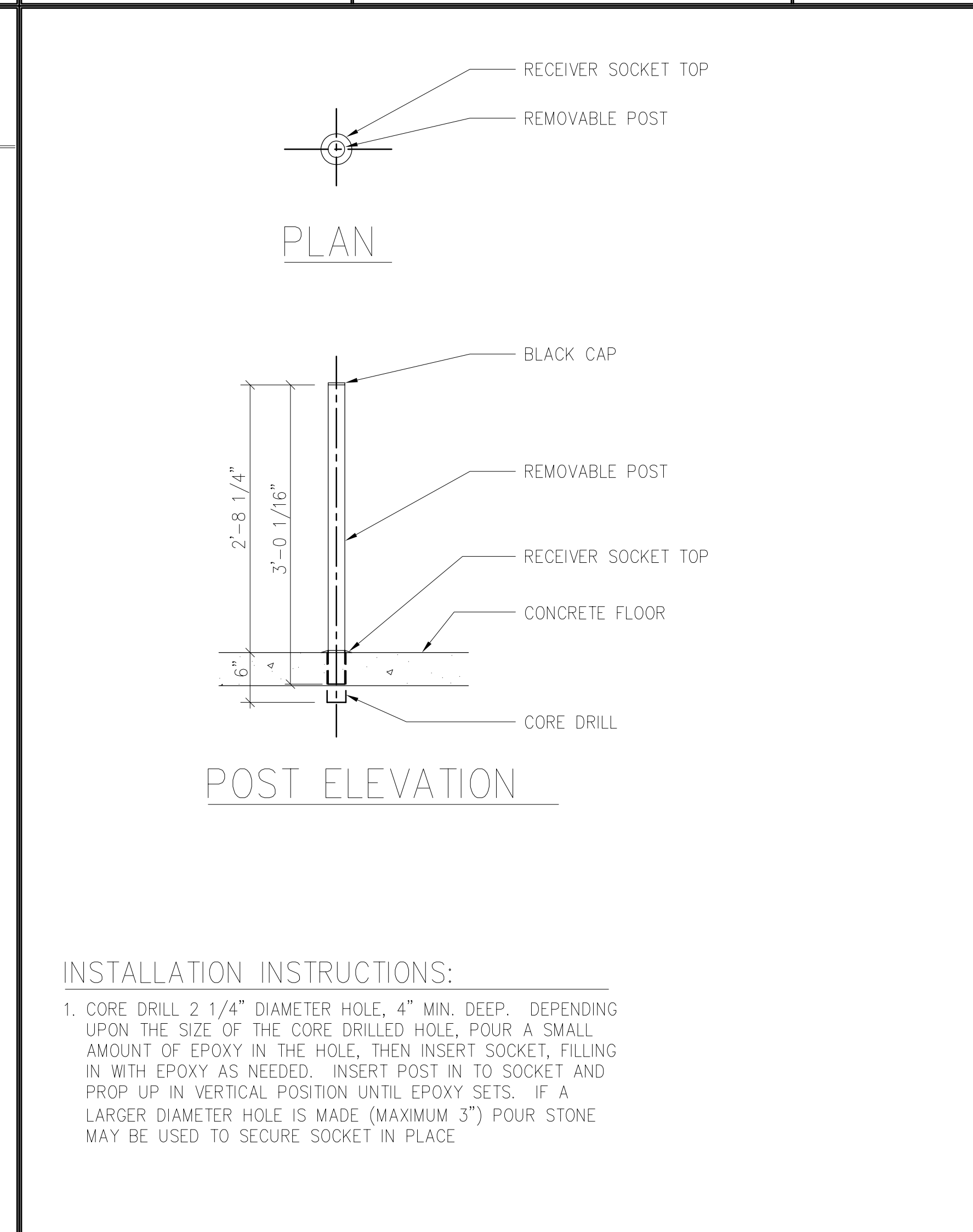
DELI MONITOR MOUNTING	DATE: 9/6/16
MASTER SPECIFICATION DETAIL	SCALE: NONE DRAWN: TMW
ASD-72	



DOUBLE ACTING DOOR FRAME AT STUD PARTITION	DATE: 8/7/13
MASTER SPECIFICATION DETAIL	SCALE: NONE DRAWN: ZAW
ASD-56	



WALL TO FLOOR BASE TYPE-D	DATE: 11/7/13
MASTER SPECIFICATION DETAIL	SCALE: NONE DRAWN: ZAW
ASD-51D	



REMOVABLE PROTECTIVE POST INSTALLATION	DATE: 5/24/16
MASTER SPECIFICATION DETAIL	SCALE: NONE DRAWN: ZAW
ASD-19	

CAPSTONE project services, plc
2211 WIDMAN WAY, SUITE 220
FORT MYERS, FL. 33901

COMMONWEALTH OF FLORIDA
JOHN MARK HUGHES
Lic. No. 0401.014186
ARCHITECTS
6-1-2020

CAPSTONE PROJECT SERVICES, PLC
ARCHITECTURAL & CONSTRUCTION SERVICES
OFFICE LOCATIONS: ROUNDTREE, VA & FT. MYERS, FL

A REMODEL FOR:

KROGER R-215
7480 LEE HIGHWAY
FAIRLAWN, VA

PROJECT DATE: 6-1-2020
CONSTRUCTION SET

KROGER STANDARD DETAILS

NO.	REVISIONS	DATE	DESCRIPTION

PROJECT NO: CPS2020-051.4
CAD DWG FILE: CPS2020-051.4-A5.0
DRAWN BY: JMH
CHK'D BY: JMH/LEN

A5.1