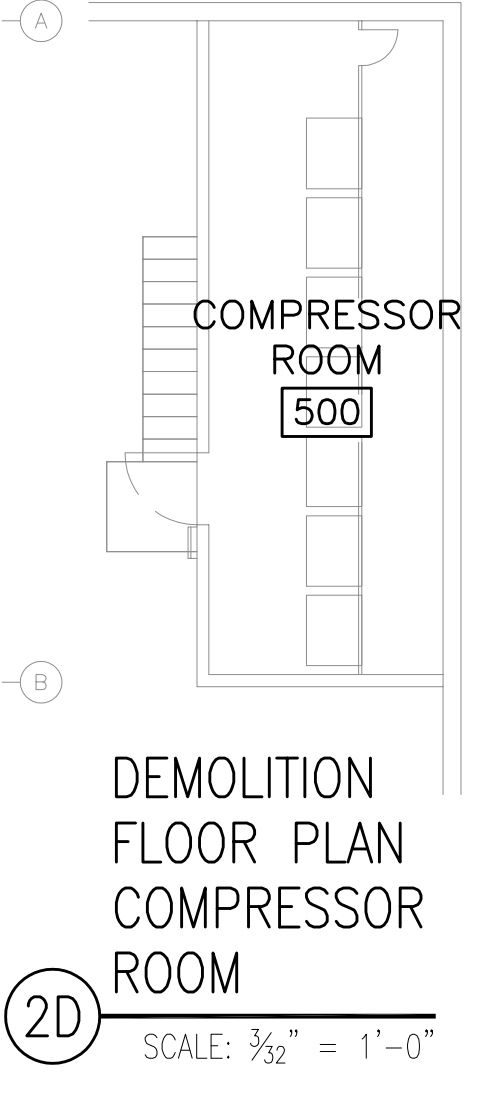


3B DEMOLITION FLOOR PLAN - MAIN LEVEL
SCALE: 3/32" = 1'-0"

5A DEMOLITION FLOOR PLAN - ELEVATED OFFICES
SCALE: 3/32" = 1'-0"



2D DEMOLITION FLOOR PLAN
COMPRESSOR ROOM
SCALE: 3/32" = 1'-0"

PLAN NOTES

1. REMOVE EXISTING SHELVING SYSTEMS COMPLETE INCLUDING ANY ASSOCIATED LIGHTING/POWER, END CAPS, AISLE DISPLAYS AND FILLERS. KROGER P.M. TO DIRECT/DETERMINE WHICH SHELVING UNITS ARE TO BE RE-USED/RELOCATED PER A1.1 AND UNITS FOR DISPOSAL BY G.C. SEE ELECTRICAL DRAWINGS.
2. REMOVE & DISPOSE OF EXISTING FIXTURE. NO ELECTRICAL OR PLUMBING WORK REQUIRED.
3. REFRIGERATION CONTRACTOR TO REMOVE & DISPOSE OF FIXTURE. SEE ELECTRICAL, PLUMBING AND/OR REFRIGERATION DRAWINGS FOR MORE INFORMATION. REFER TO SPECIFICATION SECTION 114143 FOR APPLIANCE DISPOSAL REQUIREMENTS. GENERAL CONTRACTOR TO COORDINATE.
4. OWNER TO REMOVE & RELOCATE/DISPOSE OF EXISTING COMPUTER TERMINAL AND/OR SCALE. G.C. TO COORDINATE & REMOVE ELECTRICAL SERVICE WHERE/IF DIRECTED BY ELECTRICAL DRAWINGS.
5. REMOVE & DISPOSE OF EXISTING DOOR, FRAME AND PORTION OF WALL BESIDE/ABOVE EXISTING OPENING TO PROVIDE NEW OPENING SIZE & NEW STUD BOX HEADER. COORD. SIZE W/NEW DOOR REQUIREMENTS (A3.1).
6. REMOVE & DISPOSE OF EXISTING STEEL BOLLARD/GUARD COMPLETE. PATCH FLOOR/PAVEMENT WHERE REQUIRED.
7. REMOVE & DISPOSE OF EXISTING OVERHEAD DOOR & ASSOCIATED TRACK AS REQUIRED FOR NEW DOOR SYSTEM PER A3.1. PATCH ANY FLOOR/WALL PENETRATIONS NOT RE-USED BY NEW DOOR.
8. REMOVE & DISPOSE OF EXISTING DOCK LIGHT. EXISTING WALL MOUNTING BRACKET TO REMAIN FOR RE-USE.
9. REMOVE & DISPOSE OF EXISTING DOCK DOOR SEALS, BUMPER & HOOD COMPLETE. PATCH ANY WALL PENETRATIONS NOT RE-USED BY NEW DOOR DOOR PACKAGE.

GENERAL NOTES

1. THE GENERAL CONTRACTOR IS RESPONSIBLE FOR REMOVAL OF ALL EXISTING STRUCTURE, FOOTINGS, WALLS, FLOOR SLABS, FIXTURES, ELECTRICAL, PLUMB., MECH. & REFRIGERATION, WHETHER SHOWN OR NOT SHOWN ON THE DEMOLITION DRAWINGS IN THIS SET, AS REQUIRED TO PERFORM ALL NEW WORK INDICATED ON DRAWINGS UNLESS SPECIFICALLY INDICATED AS RESPONSIBILITY KROGER OR KROGER HIRED CONTRACTOR. THE GENERAL CONTRACTOR SHOULD VISIT THE PROJECT SITE PRIOR TO BIDDING & INSPECT EXISTING CONDITIONS. ONLY ITEMS FOUND BELOW BUILDING SLAB THAT ARE NOT DESCRIBED IN THESE DRAWINGS AND ARE IN CONFLICT W/NEW WORK WILL BE CONSIDERED FOR ADDITIONAL COMPENSATION.
2. ALL FIRE PROTECTION SPRINKLER SYSTEM, FIRE ALARM AND SMOKE ALARM SYSTEM COMPONENTS ARE TO REMAIN INTACT AND FUNCTIONAL DURING CONSTRUCTION PROCESS OR AS/IF REQUIRED BY NEW CONSTRUCTION DOCUMENT MODIFICATION DRAWINGS & SPECIFICATIONS AS WELL AS NEW FIRE PROTECTION SHOP DRAWINGS (UNDER SEPARATE SUBMITTAL).
3. THE OWNER SHALL HAVE THE OPTION TO RECLAIM ANY FIXTURE REQUIRING REMOVAL PRIOR TO DISPOSAL.
4. EXISTING FIRE PROTECTION SPRINKLER SYSTEM, FIRE ALARM AND SMOKE ALARM SYSTEMS TO REMAIN INTACT AND FUNCTIONAL DURING CONSTRUCTION PROCESS.
5. UNLESS SPECIFICALLY INDICATED, ALL STEEL STRUCTURE SHALL REMAIN IN PLACE & UNDISTURBED INCLUDING ANY FRONT ELEVATED OFFICE STRUCTURAL SUPPORTING COLUMNS, BEAMS, JOISTS, ETC..
6. REFER TO ELECTRICAL, PLUMBING AND MECHANICAL DRAWINGS FOR MORE INFORMATION ON DEMOLITION WORK RELATED AND REQUIRED.
7. SEE AS-5 SHEETS FOR ASD DETAILS.
8. G.C. TO REMOVE & DISPOSE OF ANY EXISTING CORNER GUARD, NOT INDICATED ON DRAWINGS BUT OCCURRING AND NOT REQUIRED FOR NEW FIXTURE LOCATIONS, AND ANY ASSOCIATED IN-SLAB SLEEVE WHERE OCCURS. PATCH FLOOR WHERE HOLE OCCURS W/ GROUT.
9. ALL WALLS, PIPE GUARDS/SLEEVES, ATTACHMENT BOLTS, ETC. INDICATED AS OR RESULTING FROM REMOVED ITEMS SHALL BE ELIMINATED FROM FLOOR AND FLOOR SHALL BE REPAIRED TO MATCH EXIST. ADJACENT FINISH.
10. FURNISH & INSTALL TEMPORARY PARTITIONS TO SEPARATE WORK AREAS FROM AREAS ACCESSIBLE TO THE PUBLIC USING PARTITIONS PER ASD-162A.

NO.	DATE	DESCRIPTION

PROJECT NO.: CPS2020-051.4
CAD DWG FILE: CPS2020-051.4-AD1.1
DRAWN BY: JMH
CHK'D BY: JMH/LEN