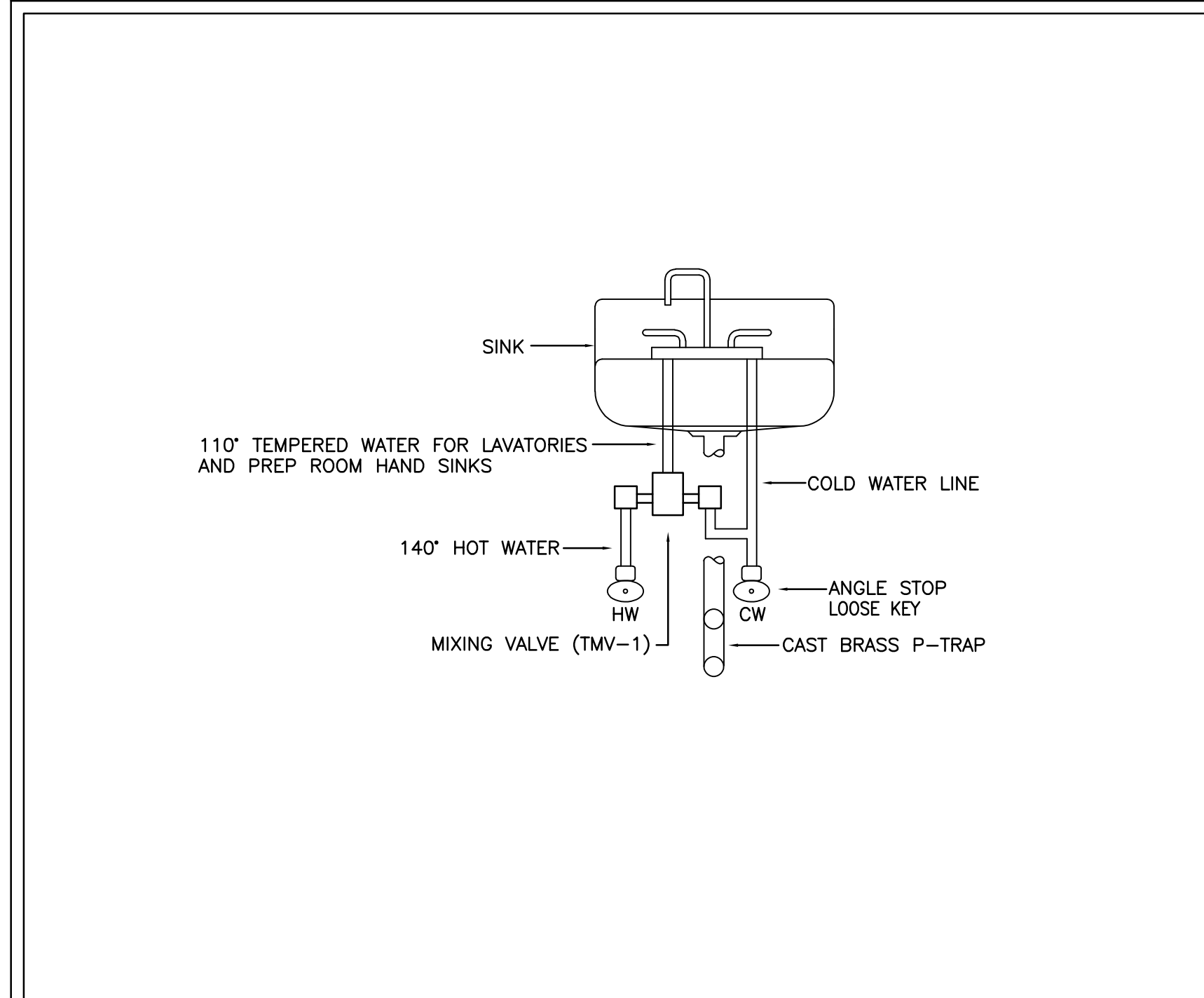
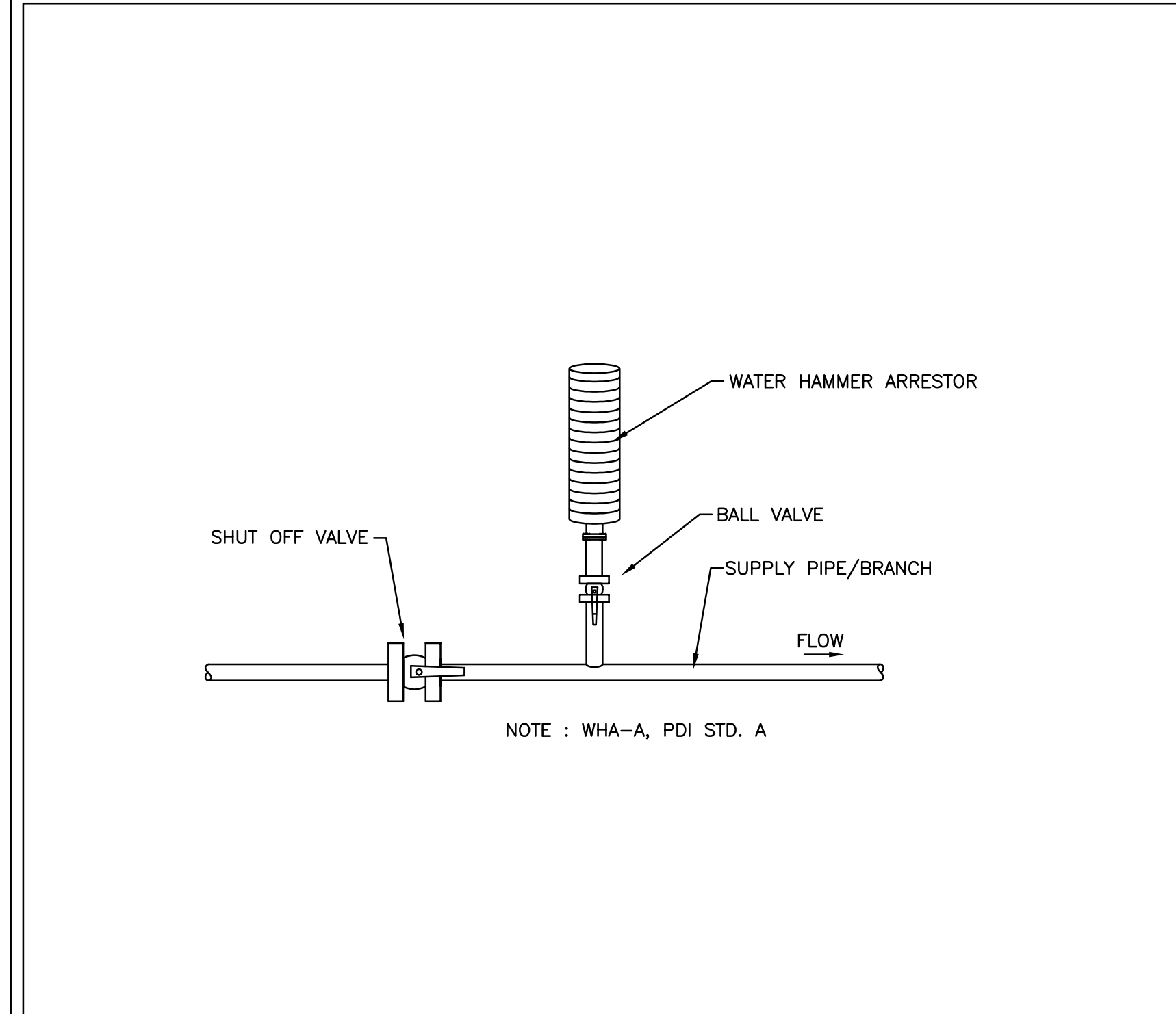


**1 CAP AND ABANDON DRAIN DETAIL**  
NOT TO SCALE



**2 TEMPERATURE MIXING VALVE DETAIL**  
NOT TO SCALE



**3 WATER HAMMER ARRESTOR DETAIL**  
NOT TO SCALE

**PLUMBING FIXTURE AND EQUIPMENT CONNECTION SCHEDULE**

MARK (KROGER DESIGNATION)	DESCRIPTION	WATER				GAS	WASTE	VENT	LOCATION / REMARKS
		CW	HW	FW	RO				
D70V	SINGLE CUP COFFEE MACHINE	1/2"	---	---	---	---	---	---	BREAK ROOM
GE235-2C	2 LEVER SPRAY DOWN PROPORTIONER	3/4" HB	---	---	---	---	---	---	REQUIRES HOSE BIBB, HB-1.
GE235-3	3 LEVER SPRAY DOWN PROPORTIONER	---	3/4" HB	---	---	---	---	---	REQUIRES HOSE BIBB, HB-1, WITHIN 5' OF UNIT
GE236-2C	2 BUTTON PROPORTIONER FOR 3-COMP SINK	---	---	---	---	---	---	---	REQUIRES A 3/8" NPT INSTALLED BETWEEN FAUCET AND PRE-RINSE SPRAYER
HB-1	HOSE BIBB	3/4"	3/4"	---	---	---	---	---	SEE FLOOR PLANS FOR HOT OR COLD WATER TO HOSE BIBB. MOUNT 24" A.F.F..
HB-2	CASE MOUNTED HOSE BIBB	---	1/2"	---	---	---	---	---	SEE DETAIL PSD-21 ON P5.1
P54	PRODUCE MISTING CONTROL/TIMER	---	---	---	1/2"	---	---	---	
PL1BR	HAND SINK	1/2"	1/2"	---	---	---	1 1/2"	1 1/2"	BREAK ROOM
PL1F	HAND SINK	1/2"	1/2"	---	---	---	1 1/2"	A.A.V.	FLORAL KIOSK
PL1PC-1B	1-COMPARTMENT SINK	1/2"	1/2"	---	---	---	FD-4	---	DELI PREP. SEE DETAIL PSD-5A ON P5.1.
PL3-20	3-COMPARTMENT SINK	3/4"	3/4"	---	---	---	FD-4	---	SEE DETAILS PSD-7 ON P5.1 (UTENSIL WASHING SINK) AND PSD-7A (CONDITIONING SINK) ON P5.1
PLC-1B	RESTROOM COUNTERTOP SINK	1/2"	1/2"	---	---	---	1 1/2"	1 1/2"	SEE DETAIL PSD-50 ON P5.1. FAUCET SUPPLIED AND INSTALLED BY P.C..
PLC-2B	RESTROOM COUNTERTOP SINK	1/2"	1/2"	---	---	---	1 1/2"	1 1/2"	SEE DETAIL PSD-50 ON P5.1. FAUCET SUPPLIED AND INSTALLED BY P.C..
PLHSSW	HAND SINK	1/2"	1/2"	---	---	---	1 1/2"	1 1/2"	DELI PREP
PLHSWE	HAND SINK WITH EYEWASH	1/2"	1/2"	---	---	---	1 1/2"	1 1/2"	PRODUCE PREP
PLHSW	HAND SINK	1/2"	1/2"	---	---	---	1 1/2"	1 1/2"	DELI PREP
PLPROWS	PRODUCE REVERSE OSMOSIS SYSTEM	1/2"	---	---	---	---	(E)FS	---	FLORAL STORAGE
PLTLF	WATER CLOSET - GENERAL USE	1/2"	---	---	---	---	4"	2"	TANK TYPE
PLTLFH	WATER CLOSET - ADA COMPLIANT	1/2"	---	---	---	---	4"	2"	TANK TYPE
PLUR	URINAL - ADA COMPLIANT	3/4"	---	---	---	---	2"	2"	WALL HUNG, MOUNT LIP AT 17" A.F.F.
S7	MINI-COMBINATION OVEN/STEAMER	---	---	---	1/4"	---	---	---	
S36TSC-8	ICE FLAKER	---	---	---	3/8"	---	2" HD	---	

① FURNISHED BY KROGER, INSTALLED BY PLUMBING CONTRACTOR.

**THERMOSTATIC MIXING VALVE SCHEDULE**

TAG	LOCATION	FLOW RATE GPM	ASSE STD	INLET INCHES	OUTLET INCHES	BASIS OF DESIGN/REMARKS
TMV-1	AT HANDSINKS AND LAVS	(0.5 MIN) 1.0	1070	3/8"	3/8"	SYMMONS 7-210-CK

**ELECTRIC WATER HEATER SCHEDULE**

TAG	LOCATION	STORAGE CAPACITY (GALLONS)	RECOVERY @107°F (GPH)	OUTLET TEMPERATURE (°F)	ELECTRICAL CHARACTERISTICS				BASIS OF DESIGN/REMARKS
					VOLTS	PHASE	AMPS	KW	
EW-1	FLORAL SINK	TANKLESS	---	VARIES	208	1	24	5.0	EEMAX AM007240T. WITH ASSE 1070 INTEGRATED MIXING VALVE.

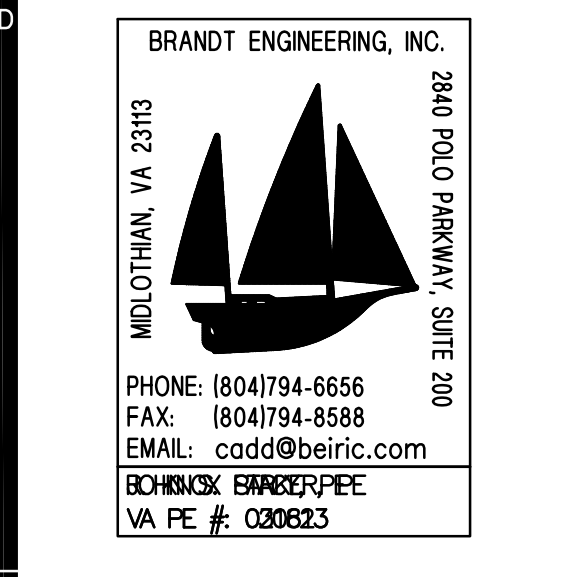
**BACKFLOW PREVENTER SCHEDULE**

MARK	TYPE	MANUFACTURER AND MODEL NUMBER	STANDARD	REMARKS
BFP-1	DUAL CHECK	WATTS #LF7R	ASSE 1024	
BFP-2	ATMOSPHERIC BACKFLOW PREVENTER	WATTS #LF9D	ASSE 1012	
BFP-3	REDUCED PRESSURE ZONE ASSEMBLY	WATTS #LF919	ASSE 1013	

- NOTES :
- ALL DOMESTIC BACKFLOW PREVENTERS SHALL BE LEAD-FREE.
  - BACKFLOW PREVENTERS SHALL BE READILY ACCESSIBLE FROM FINISHED GRADE AND BE VISIBLE FOR PERIODIC INSPECTION, REPAIR, AND REPLACEMENT.
  - BACKFLOW PREVENTERS SHALL BE INSTALLED ACCORDING TO THE MANUFACTURER'S SPECIFICATIONS AND THE USBC. VENTS OR PORTS SHALL DISCHARGE TO A DRAIN THROUGH AN APPROVED AIR GAP OR TO THE EXTERIOR VIA DRAIN PIPES.
  - TESTABLE BACKFLOW PREVENTION ASSEMBLIES SHALL BE TESTED UPON INSTALLATION PRIOR TO OCCUPANCY.



NOTE: THIS DOCUMENT MAY HAVE BEEN ELECTRONICALLY TRANSMITTED. IF UNSIGNED, IT CANNOT BE FILED FOR PUBLIC RECORD. PUBLIC RECORD FILINGS REQUIRE SIGNED AND SEALED DOCUMENTS.



CONSULTANT

A REMODEL FOR:  
**KROGER R-215**  
7480 LEE HIGHWAY  
FAIRLAWN, VA

PROJECT  
6-1-2020  
DATE CONSTRUCTION SET

PLUMBING SCHEDULES AND DETAILS

REVISIONS

NO.	DATE	DESCRIPTION

PROJECT NO: 20049  
CAD DWG FILE: 20049-P6.1.dwg  
DRAWN BY: PC  
CHK'D BY: DM/JF

**P6.1**  
SHEET NO.