

NOTE: THIS DOCUMENT MAY HAVE BEEN ELECTRONICALLY TRANSMITTED. IF UNSIGNED, IT CANNOT BE FILED FOR PUBLIC RECORD. PUBLIC RECORD FILINGS REQUIRE SIGNED AND SEALED DOCUMENTS.

BRANDT ENGINEERING, INC.
 1000 PARKWAY, SUITE 300
 MIDLOTHIAN, VA 23113
 PHONE: (804)794-6656
 FAX: (804)794-8588
 EMAIL: cadd@beinc.com
 JOHN S. PARKER, PE
 VA PE # 021813

CONSULTANT

A REMODEL FOR:
KROGER R-215
 7480 LEE HIGHWAY
 FAIRLAWN, VA

PROJECT
6-1-2020
 DATE CONSTRUCTION SET

SHEET TITLE
WATER DEMOLITION PLAN

NO.	DATE	DESCRIPTION

PROJECT NO: 20049
 CAD DWG FILE: 20049-PD1.2.dwg
 DRAWN BY: PC
 CHK'D BY: DM/JP

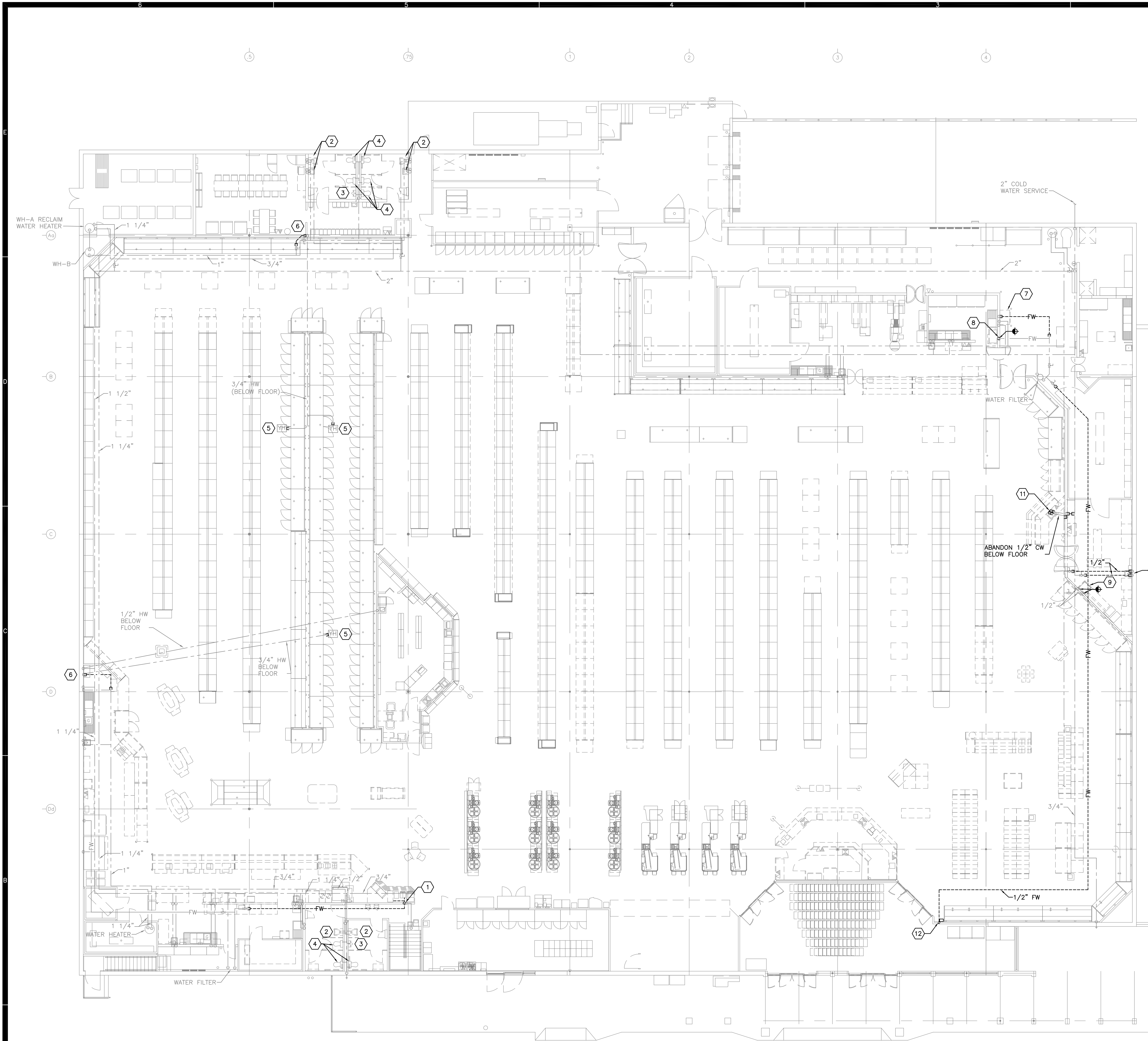
PD1.2

SHEET NO.

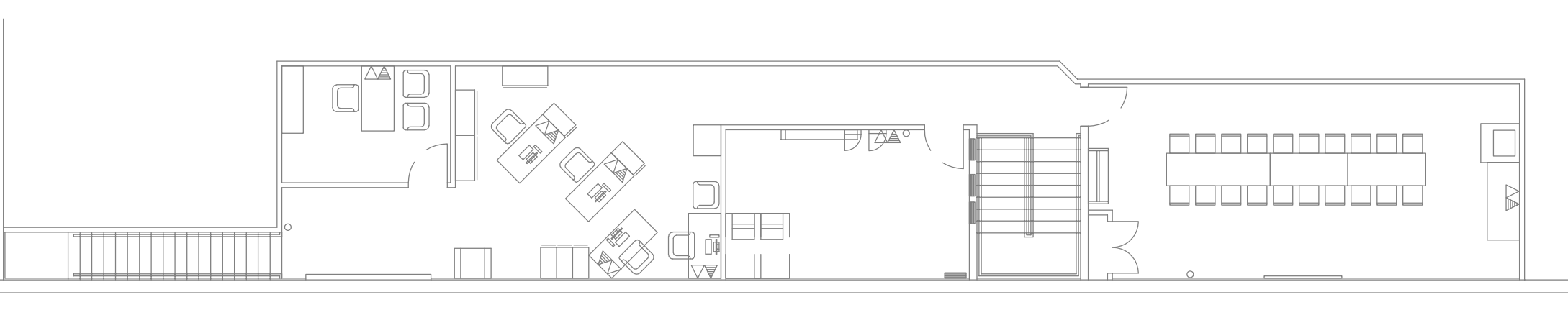
PLUMBING LEGEND	
SYMBOL/ABBREVIATION	DESCRIPTION
	EXISTING TO BE REMOVED (SHOWN DASHED)
	EXISTING PIPING (SHOWN LIGHT)
	COLD WATER PIPING (CW)
	HOT WATER PIPING (HW)
	HOT WATER RETURN PIPING (HWR)
	FILTERED WATER PIPING (FW)
	RISE THRU FLOOR OR ROOF
	DROP OR RISE
	CAPPED PIPE
	BALL VALVE
	HOSE BIBB
	YARD HYDRANT
	BACKFLOW PREVENTER
	COLD WATER HOSE BIBB
	HOT WATER HOSE BIBB
	WATER HEATER
	WATER HAMMER ARRESTOR
	REMOVE TO THIS POINT

- PLAN NOTES**
- REMOVE FILTERED WATER AND COLD WATER PIPING TO REMOVED COFFEE MAKER AND DRINK DISPENSER AND CAP AS NOTED.
 - REMOVE LAVATORY AND PREPARE PIPING FOR NEW.
 - REMOVE URINAL AND PREPARE PIPING FOR NEW.
 - REMOVE WATER CLOSET AND PREPARE PIPING FOR NEW.
 - ABANDON YARD HYDRANT. CAP PIPING BELOW FLOOR.
 - REMOVE HOT WATER PIPING. ABANDON INACTIVE PIPING IN WALL.
 - REMOVE FILTERED WATER TO REMOVED ICE MACHINE. ABANDON INACTIVE PIPING IN WALL.
 - REMOVE FILTERED WATER PIPING TO REMOVED ICE MACHINE.
 - DISCONNECT EXISTING 1/2" HOT AND COLD WATER TO REMOVED 1-COMPARTMENT SINK.
 - REMOVE HOT AND COLD WATER PIPING TO REMOVED HAND SINK. ABANDON INACTIVE PIPING IN WALL.
 - REMOVE 1/2" HOT AND COLD WATER PIPING TO REMOVED HAND SINK TO BELOW FLOOR AND CAP. ABANDON INACTIVE PIPING IN FLOOR AND IN WALL.
 - REMOVE FILTERED WATER TO REMOVED PRODUCE MISTING SYSTEM AND CAP AS NOTED.

- NOTE TO CONTRACTOR ON EXISTING CONDITIONS**
- CONTRACTOR SHALL VISIT THE SITE PRIOR TO BID AND SURVEY ALL EXISTING CONDITIONS AND EQUIPMENT PRIOR TO SUBMITTING BID FOR WORK REQUIRED BY THESE DOCUMENTS.
 - IF AT ANY TIME THERE IS DISCREPANCY BETWEEN THE PLANS AND SPECS, OR CONFUSION/CONCERN OVER REQUIRED WORK, CONTRACTOR SHALL IMMEDIATELY NOTIFY ARCHITECT, ENGINEER, AND/OR OWNER AND GET DIRECTION BEFORE PROCEEDING WITH WORK IN QUESTION.
 - FOR ALL EXISTING EQUIPMENT TO BE RELOCATED AND OR RE-USED, CONTRACTOR SHALL BE RESPONSIBLE FOR DISCONNECTION, SAFE STORAGE, AND RECONNECTION OF SAID EQUIPMENT COMPLETELY.
 - LOCATIONS OF EXISTING SYSTEMS ARE APPROXIMATE. CONTRACTOR SHALL FIELD VERIFY ALL SYSTEM LOCATIONS PRIOR TO WORK.



4A WATER DEMOLITION PLAN
 SCALE: 3/32"=1'-0"



6A ELEVATED OFFICES PLAN
 SCALE: 3/32"=1'-0"